

An Encore Partnership Between



**RUBICON**  
THEATRE COMPANY

**THE  
ACTING  
COMPANY**

# WINTERFEST

Mainstage Productions, Special Events, Student  
Matinees, Youth Concerts, and Family Festivities!

**GREAT  
EXPECTATIONS**

A MIDSUMMER  
NIGHT'S  
DREAM

*Better  
Angels*

Rubicon  
Christmas  
Memories  
Concert

*Tiny Tots  
Concert*

WINTER PROGRAMS  
DECEMBER 2025

# Our Fair Lady

## BARBARA MEISTER

### 2025-2026 Season Sponsor

Message from Producing Artistic Directors .....5

Major Sponsors .....9

Note from TAC’s Producing Artistic Director..... 11

*A Midsummer Night’s Dream* ..... 13

*Great Expectations* ..... 15

Note from the Director of *A Midsummer Night’s Dream* ..... 17

Production Notes ..... 19

*Better Angels* ..... 21–23

*Rubicon Christmas Memories* .....25

Tiny Tots Concert .....27

About the Artists | *Midsummer & Great Expectations* .....29–41

Rubicon Artistic and Production Staff .....42

Jewel Club .....47

2025–2026 Board of Directors .....48

2025–2026 Board of Advisors .....49

Donors.....50–56

Education | Support.....57

Tributes.....58

Behind-the-Scenes.....59

About The Acting Company .....62

About Rubicon Theatre Company.....63



Kimberly Hessler as Eliza Doolittle in *My Fair Lady* at Rubicon.  
Photo Credit: Jeanne Tanner

Experience NYC in Autumn as You Never Have Before!

# FALL NEW YORK TRIP

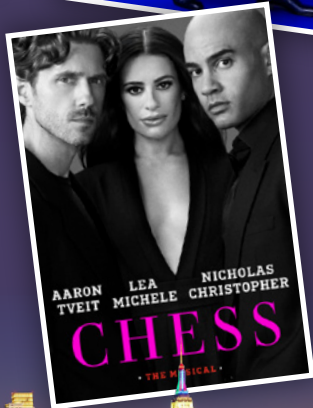
## SEPTEMBER 22 – 28, 2026

- 7 Days/6 Nights at the Marriott Marquis in Times Square.
- Orchestra Seats for 6 Shows (5 Broadway Shows and Opening Night of *Crazy Mama* Off-Broadway.)
- Behind-the-Scenes Experiences with Artists and Creatives.
- Culinary Adventures including the Micheline-Starred Blue Hill at Stone Barns, lunch at The Russian Tea Room, dinner at a Cuban eatery in Midtown, a bagel brunch welcome event with guest artists, and farewell late-night cocktails.
- A Tour of NBC Studios and Rockefeller Center.
- Hudson River Day Trip to Cold Spring.
- Optional Architectural Walking Tour of Upper East Side Gilded Age Mansions.

### Shows currently under consideration include:

*Buena Vista Social Club, Just in Time, Chess, Little Bear Bridge Road, Dog Day Afternoon, Schmigadoon, Every Brilliant Thing, The Balusters, Punch, Fallen Angels, Proof, and Masquerade.*

Save \$250 per person for reservations before December 23.



### RESERVE YOUR SPOT TODAY!

EARLY RESERVATIONS STRONGLY RECOMMENDED.

To Register Call 805.667.2912, ext. 225

## MESSAGE FROM OUR PRODUCING ARTISTIC DIRECTORS

RUBICON THEATRE COMPANY

WINTERFEST 2025

Dear Friends,

Thank you for joining us for Winterfest, a joyful celebration of artistry, imagination, and community here at Rubicon Theatre Company. This year's festival features 26 events – from mainstage productions and student matinees to family concerts and neighborhood gatherings – bringing people of all ages together through the magic of live theatre.

At the heart of Winterfest is our second-year collaboration with The Acting Company of New York, one of the nation's most respected classical theatre ensembles. We are honored to partner with this esteemed organization to premiere their productions of *A Midsummer Night's Dream* by William Shakespeare and Charles Dickens' *Great Expectations* in a vivid new adaptation by Nikki Massoud. Nine remarkable actors perform both plays in repertory, offering audiences the rare thrill of seeing the same company transform nightly into entirely different characters and worlds – sometimes in the same day! Hundreds of local high school students will also share in the experience through our school matinee program, which includes study guides and post-show discussions with the artists.

Opening weekend of the festival features *Better Angels, An Afternoon of Gratitude, Humor & Hope*, written and directed by Dakin Matthews and featuring readings from Shakespeare, Dickens, and others – starring Rainn Wilson, Joe Spano, Sylvie Davidson and more. Other highlights include *Rubicon Christmas Memories*, a heartwarming holiday concert which brings together our middle-school aged students, alumni from our education programs, and guest artists Jennifer Leigh Warren and David Burnham; and our traditional *Tiny Tots Concert and Santa Party* for families with young children. Tickets include cocoa, cookies, and a chance to pose for pictures with Rubicon Elves, Santa, Rudolph and Frosty.

As we reflect on this 2025/2026 "Crossroads" Season, we're reminded that theatre has the capacity, at its best, to connect hearts and generations. We are grateful for your continuing support.

During this holiday season, please consider a tax-deductible contribution to Rubicon. Your generosity is essential and keeps the lights bright, the music playing, and the magic alive for our entire community.

Thank you again, and Happy Holidays!



KARYL LYNN BURNS



J. SCOTT LAPP




Karyl Lynn Burns



J. Scott Lapp

# WINTERFEST

A rare chance to see two timeless classics reimagined by the *same dynamic, multi-talented cast*, in the spirit of the Ashland Shakespeare Festival and the Royal Shakespeare Company.



**A MIDSUMMER NIGHT'S DREAM**

By William Shakespeare

Directed by Risa Brainin

DEC 3 - 21, 2025



**GREAT EXPECTATIONS**

World Premiere Adaptation by Nikki Massoud

From the novel by Charles Dickens

Directed by Devin Brain

DEC 2 - 21, 2025



**Better Angels**

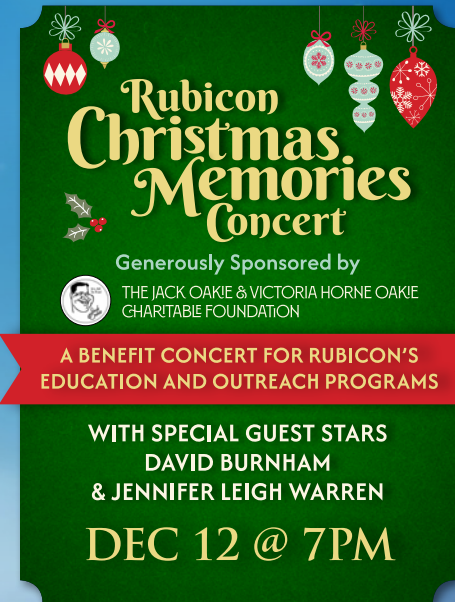
AN AFTERNOON OF GRATITUDE, HUMOR, & HOPE

A Benefit Reading Written & Directed by DAKIN MATTHEWS

Starring RAINN WILSON (*The Office*), JOE SPANO (*NCIS*), SYLVIE DAVIDSON, and Other Artists

DEC 7 @ 2PM

WinterFest Continues with Youth Concerts, Family Fun, and Student Matinees at Rubicon!



**Rubicon Christmas Memories Concert**

Generously Sponsored by THE JACK OAKIE & VICTORIA HORNE OAKIE CHARITABLE FOUNDATION

A BENEFIT CONCERT FOR RUBICON'S EDUCATION AND OUTREACH PROGRAMS

WITH SPECIAL GUEST STARS DAVID BURNHAM & JENNIFER LEIGH WARREN

DEC 12 @ 7PM



Generously Sponsored by THE JACK OAKIE & VICTORIA HORNE OAKIE CHARITABLE FOUNDATION

**Tiny Tots Concert**

Directed by Seryozha La Porte

Musical Direction by Miriam Arichea

DEC 13 @ 10AM

| Sun   | Mon   | Tue                             | Wed  | Thu  | Fri  | Sat   |
|---|-------|---------------------------------|--|--|--|---|
| NOV 30  | DEC 1 | <b>GREAT EXPECTATIONS</b> 2 7p* | <b>MIDSUMMER</b> 3 7p*                         | <b>MIDSUMMER</b> 4 7p*   | <b>GREAT EXPECTATIONS</b> 5 10a**<br><b>GREAT EXPECTATIONS</b> 7p* | Opening Night Gala<br><b>MIDSUMMER</b> 7p*                                    |
| <b>Gratitude</b> 7 2p<br><b>MIDSUMMER</b> 2p<br><b>GREAT EXPECTATIONS</b> 7p* | 8     | <b>GREAT EXPECTATIONS</b> 9 7p  | <b>MIDSUMMER</b> 10 2p<br><b>MIDSUMMER</b> 7p* | <b>MIDSUMMER</b> 11 10a**  | <b>Rubicon Christmas Memories Concert</b> 12 7p                    | <b>Tiny Tots Concert</b> 13 10a<br><b>MIDSUMMER</b> 2p<br><b>MIDSUMMER</b> 7p |
| <b>MIDSUMMER</b> 14 2p<br><b>GREAT EXPECTATIONS</b> 7p                        | 15    | <b>GREAT EXPECTATIONS</b> 16 2p | <b>MIDSUMMER</b> 17 2p<br><b>MIDSUMMER</b> 7p  | 18   | <b>MIDSUMMER</b> 19 7p   | <b>MIDSUMMER</b> 20 2p<br><b>MIDSUMMER</b> 7p                                 |
| <b>MIDSUMMER</b> 21 2p<br><b>GREAT EXPECTATIONS</b> 7p                        | 22    | 23                              | 24   | 25   | 26   | 27  |
| 28  | 29    | 30                              | 31   | *Preview<br>**Student Matinee<br>*Opening Night<br>*Talkback (post-show) |  |   |

TICKETS: [www.rubicontheatre.org](http://www.rubicontheatre.org) | 805.667.2900

# Celebrating 48 Years of Sports, Health Fitness and Friends!



HOT TUB & SAUNA

GROUP CLASSES



Come in for a tour and  
experience what it means to  
Live Life Well!



TENNIS PICKLEBALL SWIM SHUFFLEBOARD FITNESS

GAME ROOM RENTAL VENUE WELLNESS SERVICES CAFE

**Located by the beach!**

500 Sanjon Rd. Ventura, CA 805.648.5161

[www.pierpontrc.com](http://www.pierpontrc.com)

## MAJOR SPONSORS

RUBICON THEATRE COMPANY

WINTERFEST 2025

For information about becoming a sponsor or an underwriter,  
please contact Development Manager Kimiko Tokita at  
805.667.2912, ext. 226, or [ktokita@rubicontheatre.org](mailto:ktokita@rubicontheatre.org).

### SEASON/SHOW SPONSORS

Stacey and John W. Birchfield

Jordan Laby and Family

Mary Ann Cohen

The Manitou Fund

Nora McNeely Hurley  
and Michael Hurley

Barbara Meister

The Jack Oakie and Victoria Horne Oakie  
Charitable Foundation

Shawn Baker and Jeffrey Naylor

Valerie and Jeff Snider

Becky and Steve Snyder

### MEDIA PARTNERS

GoCityShopper.com/Local Link App

Jill Webb

### CO-SPONSORS

Freddie  
Contarino

Cherie  
Eulau



Paula and Scott  
Rushing

### MEDIA SPONSORS



The season is made possible in part through a grant from the City of San Buenaventura and the County of Ventura. Recent building and equipment upgrades have been made possible through a grant from the California Arts Council and the State of California.

*Our 27<sup>th</sup> Season is dedicated to longtime  
Board Member and Supporter Stephanie Zierhut.*

**YOUR TRUSTED PARTNER  
FOR SENIOR LIVING OPTIONS**



**Our Compassionate Team is  
Dedicated to Guiding You Through  
Every Step of the Process, Ensuring  
Smooth and Stress Free Transition  
to a Safe, Comfortable, and  
Caring Environment.**



**REQUEST A FREE  
CONSULTATION TODAY**

[www.agingwithsafeoptions.com](http://www.agingwithsafeoptions.com) (805) 767-7322

*"I can't recommend  
Jennifer highly  
enough for any  
family going  
through this  
journey.  
Her support made  
this transition  
possible,  
for which I am  
deeply thankful."  
- A&E Leon,  
AWSO Client*



## A NOTE FROM TAC'S PRODUCING ARTISTIC DIRECTOR

RUBICON THEATRE COMPANY

WINTERFEST 2025

The Acting Company has a tradition of over fifty years of producing repertory. Each season, we produce two (or more) plays that are presented alongside each other and share a single cast. It is a fiendishly difficult task involving the triangulation of casting, design, and theme. It also demands the actors hold two different plays in their heads. In this season, we have ensemble members that are playing more than eight characters between the two productions. A difficult thing but so very, very worthwhile because it is the perfect way to experience the virtuosic brilliance of these actors. We watch an actress play a hyper-aggressive working-class woman and a near-insane wealthy recluse in one play, and a warrior queen in the other. The actors must use every trick of voice, body, costume, and language to conjure all these different identities for an audience.



Devin Brain

This process is even more exciting when the titles feel like mirrors to each other. *A Midsummer Night's Dream* is, simply put, one of my favorite plays. It has everything: beautiful language, moving lovers, spectacular faeries, and hilarious mechanicals. It is a story that, beneath its humor, asks us important questions about how love can define our lives. I have laughed until I cried watching a 50-year-old British Clown kill himself as Pyramus; and I have fallen out of a chair watching a middle school girl do the same moment. This is a crowd pleaser by any measure.

*Great Expectations* will, I think, surprise folks. So often when we think of the work of Charles Dickens, we imagine filthy cobblestone streets, the hacking coughs of Victorian chimney sweeps, the clink of coins, and the gaunt faces of the hungry. But, Dickens was also a writer who mastered his period's version of Primetime television. *Great Expectations* is no exception. This story has EVERYTHING: orphans striving to find their place in the world, beautiful heiresses, violent criminals with hearts of gold, and, just maybe, a strain of true love. *Bridgerton* has nothing on Dickens.

I know that they will make you laugh and touch your heart. Despite being filled with danger, these plays are stories of hope. They will leave you energized and longing for more. At the same time, they ask eternal questions about social mobility, love, identity, power, and all the other things that make growing up so difficult. That is their power: they entertain us, even as they bring us face to face with ourselves.

*I hope you all get to enjoy both of these productions!*

DEVIN BRAIN

**NEW YEAR'S EVE**

WITH THE

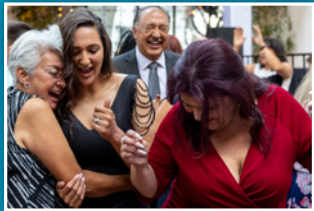
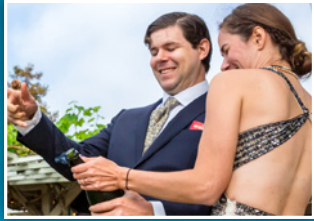


VENTURA IMPROV COMPANY



**WEDNESDAY, DECEMBER 31 | 7pm**

*It's back! Ring in the New Year with Ventura's  
favorite tradition of music and laughter!*



# Lore

photography

VENTURA, OJAI, AND SANTA BARBARA  
WEDDING, EVENT, AND FAMILY  
PHOTOGRAPHER

Evocative storytelling for the unconventional.  
Capturing real-deal life moments, unscripted.

[www.lorephotography.com](http://www.lorephotography.com)

[www.instagram.com/lorephotographyventura](http://www.instagram.com/lorephotographyventura)

*Rubicon's mainstage and summer production  
photographer since 2018.*



## SHOP AT THE WHARF VENTURA, CALIFORNIA

WE HAVE SOMETHING  
FOR EVERYONE

Over 20,000 Pairs of Mens &  
Ladies Jeans In-Stock at  
Everyday Low Prices That  
Beat Department Store Prices!

- CASUAL WEAR
- WORK WEAR
- FOOTWEAR & BOOTS
- GIFTS • SADDLERY
- FEED • PET SUPPLIES



980 FRONT STREET | VENTURA, CA 93001 | (805) 648-5037 | [www.thewharfonline.com](http://www.thewharfonline.com)

## RUBICON THEATRE COMPANY

27<sup>TH</sup> SEASON | 179<sup>TH</sup> PRODUCTION

KARYL LYNN BURNS J. SCOTT LAPP  
Producing Artistic Director Producing Artistic Director

*in Association with*

THE  
ACTING  
COMPANY

&  
Honorary Producer  
Mary Ann Cohen

*Present*

# AMIDSUMMER NIGHT'S DREAM

Written by WILLIAM SHAKESPEARE

Directed by RISA BRAININ\*

DECEMBER 3 - 21, 2025

Starring

MALLORY AVNET\*  
CHRISTIAN FROST\*  
ANGIE JANAS\*  
KRISTA GREVAS

MADELEINE BARKER\*  
BRENDAN D. HICKEY\*  
PAULI PONTRELLI\*  
DEVAN KELTY\*

TAY BASS\*  
SAM IM\*  
GEORGE ANTHONY RICHARDSON\*  
KLEO MITROKOSTAS

Scenic Design  
TANYA ORELLANA\*  
Sound Design  
SHARATH PATEL\*

Voice & Text Coach  
DUANE BOUTTÉ

Associate Director  
KATE PITT

Production Stage Manager  
JESSICA FORELLA\*

Rubicon Production Manager  
ERIN EGGERS

Costume Design  
DEVON PAINTER\*  
Composer  
LINDSAY JONES\*

Choreographer  
CHRISTINA MCCARTHY

Casting Director  
CLAIRE YENSON, CSA

Assistant Stage Manager  
LIZ HETZEL

Rubicon Technical Director  
JIMMY CALLAHAN

Lighting Design  
ALAN C. EDWARDS\*  
Props Lead  
ALEX CHOATE

Fight Choreographer/  
Intimacy Coordinator  
ELI LYNN

Assistant Casting Director  
DORIE MAGOWAN

Rubicon Producer  
STEPHANIE COLTRIN

Press Representative  
DAVID ELZER, DEMAND PR

Following the Premiere of the TAC production at Rubicon, *A Midsummer Night's Dream* will tour in repertory with *Great Expectations* to sixteen U.S. cities in 2026.



\*The Director is a member of the STAGE DIRECTORS AND CHOREOGRAPHERS' SOCIETY, a national theatrical labor union.



\*Designers represented by United Scenic Artists, Local USA 829 of the International Alliance of Theatrical Stage Employees



\*Members of Actors Equity Association, the union of professional actors and stage managers in the United States.

The use of video or audio recording devices, including cell phones, is strictly prohibited during this performance. Unauthorized photography or recording of any kind is not permitted. Please turn off all electronic devices to ensure an enjoyable experience for all.

# VENTURA COUNTY'S BEST ADVERTISING SOURCE



**In Print  
& Online  
FREE Every  
Week!**



Scan here for your  
FREE Digital Subscription!

## VCReporter

The VC Reporter has served as Ventura County's leading lifestyle reference, delivering trusted, community-focused news and information to thousands of engaged readers weekly.

**For Information Call: 805-648-2244  
or visit us at: [vcreporter.com](http://vcreporter.com)**

## RUBICON THEATRE COMPANY

27<sup>TH</sup> SEASON | 180<sup>TH</sup> PRODUCTION

KARYL LYNN BURNS J. SCOTT LAPP  
Producing Artistic Director Producing Artistic Director

in Association with

**THE  
ACTING  
COMPANY**

&  
Honorary Producer  
Mary Ann Cohen

Present

# GREAT EXPECTATIONS

World Premiere Adaptation by NIKKI MASSOUD

From the Novel by CHARLES DICKENS

Directed by DEVIN BRAIN<sup>\*</sup>

DECEMBER 2 – 21, 2025

Starring

MALLORY AVNET<sup>\*</sup>  
CHRISTIAN FROST<sup>\*</sup>  
ANGIE JANAS<sup>\*</sup>  
KRISTA GREVAS  
(Understudy)

Scenic Design  
TANYA ORELLANA<sup>\*</sup>  
Sound Design  
SHARATH PATEL<sup>\*</sup>

Voice & Text Coach  
DUANE BOUTTÉ

Associate Director  
KATE PITT

Production Stage Manager  
JESSICA FORELLA<sup>\*</sup>

Rubicon Production Manager  
ERIN EGGERS

MADELEINE BARKER<sup>\*</sup>  
BRENDAN D. HICKEY<sup>\*</sup>  
PAULI PONTRELLI<sup>\*</sup>  
DEVAN KELTY<sup>\*</sup>  
(Understudy)

Costume Design  
DEVON PAINTER<sup>\*</sup>  
Composer  
LINDSAY JONES<sup>\*</sup>

Choreographer  
CHRISTINA MCCARTHY

Casting Director  
CLAIRE YENSON, CSA

Assistant Stage Manager  
LIZ HETZEL

Rubicon Technical Director  
JIMMY CALLAHAN

TAY BASS<sup>\*</sup>  
SAM IM<sup>\*</sup>  
GEORGE ANTHONY RICHARDSON<sup>\*</sup>  
KLEO MITROKOSTAS  
(Understudy)

Lighting Design  
ALAN C. EDWARDS<sup>\*</sup>  
Props Lead  
ALEX CHOATE

Fight Choreographer/  
Intimacy Coordinator  
ELI LYNN

Assistant Casting Director  
DORIE MAGOWAN

Rubicon Producer  
STEPHANIE COLTRIN

Press Representative  
DAVID ELZER, DEMAND PR

Following the Premiere of the TAC production at Rubicon, *A Midsummer Night's Dream* will tour in repertory with *Great Expectations* to sixteen U.S. cities in 2026.



<sup>\*</sup>The Director is a member of the STAGE DIRECTORS AND CHOREOGRAPHERS' SOCIETY, a national theatrical labor union.



<sup>\*</sup>Designers represented by United Scenic Artists, Local USA 829 of the International Alliance of Theatrical Stage Employees



<sup>\*</sup>Members of Actors Equity Association, the union of professional actors and stage managers in the United States.

The use of video or audio recording devices, including cell phones, is strictly prohibited during this performance. Unauthorized photography or recording of any kind is not permitted. Please turn off all electronic devices to ensure an enjoyable experience for all.

THE WILD RIDE BEGINS THIS FEBRUARY!



# THE 39 STEPS

Written by PATRICK BARLOW  
Based on the Novel by JOHN BUCHAN

FEBRUARY 11 - MARCH 1, 2026

Directed by Artistic Associate JENNY SULLIVAN

Starring JOSEPH FUQUA

**A Hilarious Farce Based on the Alfred Hitchcock Film**

A missing spy. A mysterious woman. A man on the run.

When an ordinary man stops to help a stranger, he's catapulted into a high-speed chase across the Scottish countryside with only his wits (and a trench coat) to help him survive. This fast-paced farce features over 150 characters played by just four actors in a whirlwind of costume changes, clever staging, and nonstop laughs. A comic thriller at its best, *The 39 Steps* is a wildly inventive tale of mistaken identity, espionage, and split-second decisions that change everything.

SCAN CODE FOR TICKETS  
805.667.2900 | [www.rubicontheatre.org](http://www.rubicontheatre.org)



## A NOTE FROM THE DIRECTOR OF *A MIDSUMMER NIGHT'S DREAM*

RUBICON THEATRE COMPANY

WINTERFEST 2025

Whose Dream Is It?

When I was in college, I had the opportunity to play Hippolyta in a musical adaptation of *A Midsummer Night's Dream* set in the 1950's. It was a romp—so much fun. Since then, I've seen the play many times and always love the mechanicals. I remember directing at a community theatre and being in awe of the joy that people who don't act for living have for acting! The mechanicals in the play capture that spirit perfectly. I saw one production where the lovers in the forest were so wonderfully athletic it reminded me of watching a Bill T. Jones dance with actors flying across the stage. Highly entertaining. Yet, I came away from all of these experiences with three unanswered questions about the play.



Risa Brainin

In the opening moments of *A Midsummer Night's Dream*, the great warrior Theseus says to his wife-to-be:

"Hippolyta, I woo'd thee with my sword,  
And won thy love doing thee injuries,  
But I will wed thee in another key  
With pomp, with triumph, and with reveling."

**Question 1:** How does Hippolyta, an Amazon Queen, leader of a great society of powerful warrior women, make peace with the idea of marrying the man who destroyed her society? In Act 1, Hippolyta is a "spoil of war" but by Act 4, she is part of a happy couple. How does Hippolyta get there?

**Question 2:** Why does the fight between Titania and Oberon over the "changeling" child wreak such havoc in both the fairy and mortal world and why is the child so important to Oberon?

**Question 3:** Whose dream is it?

Today it is Hippolyta's Dream. Hippolyta has been captured along with her child. Whether she gave herself up willingly to create peace in her country or not, she is now in a strange land with very different rules for women. There, she was the most powerful. Here, it is Theseus who has all the power. When Hippolyta realizes this patriarchal society is the future for herself and her child, the dream begins. She must figure out how to survive; how to take back her power; how to be assured that her child will thrive.

Through this "dream," Hippolyta grapples with her situation, asking herself: Can you learn to love your former enemy? Does love have to be true love, or can you sprinkle love juice in someone's eyes and make them love you? What has to happen for love to grow and flourish?

With a cast of nine versatile actors playing multiple roles, our production celebrates the power of imagination to transform us into more compassionate, understanding, and generous people. We promise to take you on a ride filled with love, magic and, of course, comedy!

— RISA BRAININ, DIRECTOR

# SANTA BARBARA INDEPENDENT

**PROUDLY SUPPORTS THE  
SANTA BARBARA ARTS COMMUNITY**

**NEWS, ARTS, AND THE MOST COMPREHENSIVE  
EVENT LISTINGS IN THE COUNTY**

**IN PRINT EVERY  
THURSDAY + ONLINE DAILY  
AT INDEPENDENT.COM**

## PRODUCTION NOTES

RUBICON THEATRE COMPANY

WINTERFEST 2025

### THE ACTING COMPANY CAST & ROLES

(in alphabetical order)

| ARTIST                     | A MIDSUMMER NIGHT'S DREAM | GREAT EXPECTATIONS                      |
|----------------------------|---------------------------|---|
| Mallory Avnet*             | Helena/Starveling         | Ensemble, Estella u/s                   |
| Madeleine Barker*          | Hermia/Snout              | Estella/Biddy/Others/Miss Havisham u/s  |
| Tay Bass*                  | Bottom                    | Herbert Pocket/Miss Sally Pocket/Others |
| Christian Frost*           | Demetrius/Quince          | Drummler/Compeyson/Orlick/Others        |
| Brendan D. Hickey*         | Theseus/Titania           | Magwitch/Jaggers/Others                 |
| Sam Im*                    | Lysander/Flute            | Pip                                     |
| Angie Janas*               | Hippolyta/Oberon          | Miss Havisham/Mrs. Joe/Others           |
| Pauli Pontrelli*           | Puck/Philostrate          | Pumblechook/Miss Camilla Pocket/Others  |
| George Anthony Richardson* | Egeus/Snug                | Joe/Matthew/Others                      |
| Devan Kelty*               | Repertory u/s             | Repertory u/s                           |
| Krista Grevas              | Repertory u/s             | Repertory u/s                           |
| Kleo Mitrokostas           | Repertory u/s             | Repertory u/s                           |

#### A MIDSUMMER NIGHT'S DREAM

##### Setting

Duke Theseus' Court and  
a wood nearby

##### Time

Recent

##### Runtime

90 minutes,  
no intermission

#### GREAT EXPECTATIONS

##### Setting

Kent, Kent Marshes,  
London

##### Time

Early 1800s

##### Runtime

2.5 hours with  
15 minute intermission

The use of cameras or recording devices is strictly prohibited during the performance.



@sbindependent on all platforms

Santa Barbara  
**Independent**  
INDEPENDENT.COM



\*Members of Actors Equity Association, the union of professional actors  
and stage managers in the United States

DANCE TO THE MUSIC THIS MARCH!



Written by ROBERT STERNIN and PRUDENCE FRASER  
Music by THE BANDS WE LISTENED TO  
ON VINYL IN OUR BASEMENTS

Directed by SEAN DANIELS  
Music Supervision by DILLON KONDOR  
Music Direction by BRETT RYBACK

MARCH 25 - APRIL 12, 2026

Set to the soundtrack of a generation, this funny, heartfelt new jukebox musical follows four friends who meet freshman year of college and vow to change the world, and to be there for each other, always. Created by the writers of hit TV shows like "The Nanny," and Off-Broadway's *Under My Skin*, this World Premiere rock 'n' roll musical is a timely story about the choices we make, the trials, triumphs, and turning points that define a lifetime – and the one thing that matters most – somebody to love. Songs include "Dance to the Music," "Call Me," "Some Kind of Wonderful," "Feel Like Making Love," "Locomotive Breath," and "Takin' It to the Streets," as well as the title song.

SCAN CODE FOR TICKETS  
805.667.2900 | [www.rubicontheatre.org](http://www.rubicontheatre.org)



 RUBICON THEATRE COMPANY

RUBICON THEATRE COMPANY

WINTERFEST 2025

A BENEFIT STAGED READING

to Support the Partnership of  
Rubicon Theatre Company and The Acting Company  
in the Presentation of Classics for the Stage and Educational Programs

*Better Angels*  
AN AFTERNOON OF  
GRATITUDE, HUMOR, & HOPE

Written and Directed by  
DAKIN MATTHEWS

DECEMBER 7, 2025

VENTURA CENTER FOR SPIRITUAL LIVING  
101 S. Laurel Street, Ventura, CA 93001

Starring  
*(in alphabetical order)*

SYLVIE  
DAVIDSON

JOE  
SPANO

RAINN  
WILSON

Following the performance, those who purchased Patron Tickets are invited to join the cast for dinner at a private home.

Special thanks for Stacy and Ryan Hanlon for their hospitality, and to Seasons Catering.

The use of video or audio recording devices, including cell phones, is strictly prohibited during this performance. Unauthorized photography or recording of any kind is not permitted. Please turn off all electronic devices to ensure an enjoyable experience for all.



WHERE EVERY VOICE MATTERS

# Delivering Real People To Local Business



WE OUTPERFORM THE INDUSTRY  
WE DELIVER ACTUAL PEOPLE

WE ARE LOCAL MARKETING EXPERTS  
WE DO IT ALL - BIG OR SMALL



today's hits + yesterday's favorites



Find us on Facebook & Instagram

### PART I

- Recommendation for a Day of Public Thanksgiving and Prayer (George Washington)
- Psalm 136
- St. Paul in the First Letter to Timothy, Chapter 2
- A Hymn by Martin Rinkhart, 1636
- A Jewish Morning Prayer for Men, from the Talmud
- Fifteenth Century Rabbi
- Meister Eckhart
- Chinese Proverb
- Abraham's Prayer from the Quran
- Dalai Lama
- Buddha
- George Bernard Shaw

### PART II

- Shakespeare on Thankfulness
- Musical Interlude
- Twelfth Night (Sebastian)
- Hamlet (Hamlet)
- As You Like It (Viola)
- Much Ado About Nothing (Beatrice and Benedick)
- Twelfth Night (Viola)
- King Lear (Lear to Goneril)
- The Winter's Tale (Polixenes)
- Romeo and Juliet (Capulet)
- Much Ado About Nothing (Don John)

### PART III

- Annie Robinson, Poet
- Arabic Proverb
- Fred De Witt Van Amburgh
- Cicero
- Anonymous
- Jim Lovell, Astronaut
- Oscar Wilde
- From Winnie the Pooh (A.A. Milne)
- G.B. Stern
- A Spanish Proverb
- Charles Dickens
- O. Henry
- John F. Kennedy
- Tecumseh, Shawnee Chief

Musical interludes after each section performed by Sylvie Davidson.  
Program subject to change.

A DATE WITH HISTORY THIS MAY!

# Eleanor



By MARK ST. GERMAIN

Directed by DAVID ELLENSTEIN

Starring KANDIS CHAPPELL

MAY 13 - 31, 2026

In this tour-de-force solo performance described as “brilliant and emotionally relevant” by the *Wall Street Journal*, Kandis Chappell brings First Lady Eleanor Roosevelt to vivid life. Candid and commanding, vulnerable and visionary, from the shadows of the White House to the global stage, Eleanor finds her purpose at life’s greatest crossroads, shaping a legacy that continues to inspire. The story takes audiences from Hyde Park to The White House and beyond and provides a rich personal account of the Roosevelt family, dynasty and presidency. If you loved last year’s *Eisenhower*, you’ll be enthralled by this story about the passionate and unforgettable woman.

SCAN CODE FOR TICKETS  
805.667.2900 | [www.rubicontheatre.org](http://www.rubicontheatre.org)



 RUBICON THEATRE COMPANY

KARYL LYNN BURNS  
Producing Artistic Director

J. SCOTT LAPP  
Producing Artistic Director

in Association with



THE JACK OAKIE & VICTORIA HORNE OAKIE  
CHARITABLE FOUNDATION

&

Co-Sponsored by CHUCK KASPER

Presents

## Rubicon Christmas Memories Concert

Directed by SERYOZHA LA PORTE  
Musical Direction by MIRIAM ARICHEA

DECEMBER 12, 2025

Starring

VIVIAN ACCOLA  
ALYSSA RENAE  
HEART HEIMBINDER  
DENNISE SAGRADO  
DANE TROSSMAN

IAIN BELL  
VIVIE GIULIANI  
HERON HEIMBINDER  
PAZ SCHAFFER  
HARPER WEYMAN

ISABELLA DE LOS SANTOS  
HARPER HAM  
HEALEY RAMOT  
TESSA SHINDEN  
COLE WILLIAMS

Featuring Rubicon Alumni

ANNA DEMARIA  
GUS GRAHAM

MADELINE GAMBON  
NATALIE GRAHAM  
PARKER HARRIS

REBECCA GRAHAM  
KATY HARRIS

and Special Guest Stars

DAVID BURNHAM      JENNIFER LEIGH WARREN

Production Stage Manager  
XANDER YOUNG

Sound Design  
GABI LIMA

Keyboard  
MIRIAM ARICHEA

Drums  
GUS GRAHAM

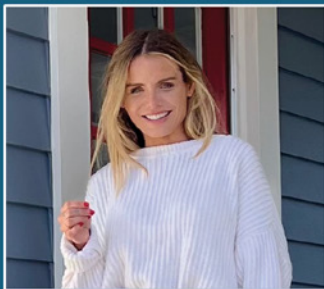
Bass  
WYATT SCHMITZ FLORES

# VENTURA RENTALS



## Short Term and Long Term

- 3 Bungalows & 3 Townhouse Suites to choose from
- All newly remodeled with high-end amenities
- Great location – walk to Old Town and the beach!
- Perfect getaway for visiting friends or family
- Ideal for short-term business stays



**Mention this Ad and  
Save 15% Off  
your first booking!**  
**Call Sarah (818) 731-2090**  
Local family owned & operated

**KARYL LYNN BURNS**  
Producing Artistic Director

**J. SCOTT LAPP**  
Producing Artistic Director

*in Association with*



THE JACK OAKIE & VICTORIA HORNE OAKIE  
CHARITABLE FOUNDATION

&

Co-Sponsored by CHUCK KASPER

*Presents*

# Tiny Tots Concert

Directed by SERYOZHA LA PORTE  
Musical Direction by MIRIAM ARICHEA

**DECEMBER 13, 2025**

Starring The Rubicon Elves

VIVIAN ACCOLA  
ALYSSA RENAE  
HEART HEIMBINDER  
DENNISE SAGRADO  
DANE TROSSMAN

IAIN BELL  
VIVIE GIULIANI  
HERON HEIMBINDER  
PAZ SCHAFFER  
HARPER WEYMAN

ISABELLA DE LOS SANTOS  
HARPER HAM  
HEALEY RAMOT  
TESSA SHINDEN  
COLE WILLIAMS

With Special Guest Stars from the North Pole

FROSTY THE  
SNOWMAN

SANTA  
CLAUS

RUDOLPH THE  
RED-NOSED REINDEER

Production Stage Manager  
XANDER YOUNG

Sound Design  
GABI LIMA

Keyboard  
MIRIAM ARICHEA

Drums  
GUS GRAHAM

Bass  
WYATT SCHMITZ FLORES

After the concert, please follow Santa and friends downstairs to The Rose Room where Rubicon volunteers have arranged, cookies and cocoa and juice for our young guests. We have a special area set up where you can take keepsake holiday photos of your children or grandchildren. Volunteers are available if you need assistance or have forgotten your phone or camera.

The performance runs approximately 30 minutes in the theatre.

# According to Forbes... you have 7 seconds to make a first impression.

Let's update your Headshot and make it a good one!



Present your Rubicon receipt to  
SAVE \$50 on the shooting fee.

Studio in Downtown Ventura  
www.trinitywheelerphotography.com  
805.242.1404 / info@trinitywheelerphotography.com



# Introducing

## MUSE MEMBERSHIPS

ELEVATE YOUR BUSINESS WITH A STUDIO LOCATION



www.museventura.com | 805.500.6876

## ABOUT THE ARTISTS | *Midsummer & Great Expectations*

RUBICON THEATRE COMPANY

WINTERFEST 2025



**MALLORY AVNET** (*Helena, Starveling/ u/s*), is delighted to be a part of this repertory season with this wonderful team. Originally from Philly,

Mallery currently resides in NYC. She most recently performed in the U.S. premiere of *Nora: A Doll's House* at Hedgerow Theatre. She is a graduate of The University of Michigan where she obtained her B.F.A., and NYU where she received her M.F.A. NYU credits include *Major Barbara, The Office Plays, and The Hypochondriac.*



**MADELEINE BARKER** (*Hermia, Snout/ Estella, Biddy, u/s for Miss Havisham*) is an actor, movement choreographer, and educator; and is

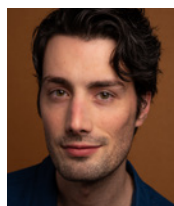
thrilled to be making her debut with The Acting Company. Off-Broadway credits include *The Meeting: The Interpreter* (St. Clements Theatre) and *Gregorian* (The WAT Project at Soho Rep - The WalkerSpace). Selected regional credits include *Sisters* (World Premiere at Northern Stage), Lizzy Bennet in *Pride and Prejudice* (Arkansas Rep), Mary/Miss Bingley in *Pride and Prejudice* (Hartford Stage), *Intimate Apparel* (North Coast Rep), *The Inferior Sex* and *A Christmas Carol* (Trinity Repertory Company), *Natasha, Pierre and the Great Comet of 1812* (The Wilbury Theatre), *Grease* (Ogunquit Playhouse, John

W. Engeman Theater), *South Pacific* (Riverside Theatre, Moonlight Amphitheater Productions), *Jane Eyre* (World Premiere adaptation with Counter Balance Theatre), and *Merchant of Venice* (The New Swan). Madeleine has been seen on film in *Goodnight Death, Still Light, and Start Breaking My Heart*. She holds an M.F.A. in Acting from Brown University/Trinity Rep. "Much gratitude and love to Mom, Dad, and Alfie."



**TAY BASS** (*Bottom/ Herbert Pocket, Miss Sally Pocket, Others*) is a recent graduate of the Brown/ Trinity M.F.A. Acting program. Their

theatre credits include *POTUS* (Trinity Repertory Company), *Hypeman: A Break Beat Play* (The Flea), and *Orlando* (Williamstown Theatre Festival), among many others. Tay has collaborated on the development of new works with Soho Rep, The Tank, Noor Theatre, The Director's Company, and if you don't blink you can catch them in *The Chair Company* on HBO. In 2024, their experimental documentary short *The P Word* was developed by a grant through the Brown Arts Institute, where it also premiered. @taybass & www.taybass.com



**CHRISTIAN FROST** (*Demetrius, Quince/Drummler, Compeyson, Orlick, Others*) is absolutely delighted to be a part of this terrific

company of artists. Originally a South Florida native, he now happily resides in NYC. Christian has been a company member at The Shakespeare Theatre of New Jersey for the past seven seasons. Past productions include *The Importance of Being Earnest*, *Sense and Sensibility*, *As You Like It*, *A Midwinter Night's Dream*, *And a Nightingale Sang...*, *Julius Caesar*, *Much Ado About Nothing*, *The Metromaniacs*, and *Romeo and Juliet*. Other favorite regional credits include *The Horn in the West*, *The Odyssey*, and *Theodore Thudd* for SAHA Theatricals. Christian received his B.F.A. from Elon University. "For Fi."



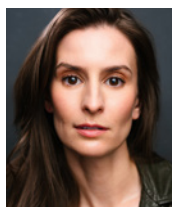
**BRENDAN D. HICKEY** (*Theseus, Titania/Magwitch, Jiggers, Others*) is thrilled to join The Acting Company this season. He has worked Off-

Broadway at Manhattan Theatre Club; and with regional theatres including Repertory Theatre of St. Louis, Alabama Shakespeare Festival, Arkansas Repertory Co., Portland Stage Co., the Williamstown Theatre Festival and Trinity Repertory Co. On television, he appeared on *Law and Order SVU*. Brendan completed his M.F.A. at Brown University/Trinity Repertory. "Always for Mom."



**SAM IM** (*Lysander, Flute/Pip*) is a New York-based actor and proud Baltimorean, most recently seen on stage as "Husband" in *Machinal* at New

York City Center. Grad school credits include *The Importance of Being Earnest* (Algernon), *The Oresteia* (Agamemnon) and *The Cherry Orchard* (Trofimov). He thanks his friends and family for putting up with the bits, and Amber and his managers for letting him go on tour. Sam received his B.F.A. from NYU and his M.F.A. from Juilliard.



**ANGIE JANAS** (*Hippolyta, Oberon/Miss Havisham, Mrs. Joe, Others*) has appeared Off-Broadway in *Hamlet*, *Rosencrantz and*

*Guildenstern are Dead*, *Macbeth*, *A Connecticut Yankee in King Arthur's Court* (The Acting Company); and *Stuffed* (Westside Theatre). Select regional credits include *Sense and Sensibility*, *Murder on the Orient Express*, *The Play That Goes Wrong*, and *Pride and Prejudice* (Syracuse Stage); *The Glass Menagerie* (Barrington Stage Company); *The Lion in Winter* (Repertory Theatre of St. Louis); *Romeo and Juliet*, *Love's Labor's Lost*, *The Three Musketeers* and *King Lear* (Hudson Valley Shakespeare Festival); *In Game or Real* and *The Winter's Tale* (Guthrie Theater); and *Noises Off*, *Steel Magnolias*, *The*

*Revolutionists*, and *The Merchant of Venice* (Gulfshore Playhouse). Angie is a graduate of the University of Minnesota/Guthrie Theatre B.F.A. Actor Training Program. "For Barry." [www.angiejanas.com](http://www.angiejanas.com)



**PAULI PONTRELLI** (*Puck, Philostrate/Pumblechook, Sally Wemick, Others*) (they/them) is a Colombian-American performer and artist

based in NYC. Theatre credits include *The Trees* (Playwrights Horizons), *This Clement World* (St. Ann's Warehouse), *House of Dance* (Half Straddle, Kyoto Experiment, Zürcher Theater Spektakel), *The Visitor* (The Public, Original Cast Recording), *Look Upon Our Lowliness* (The Movement Theatre Company), *Don Juan* (Fischer Center/Bard Summerscape), *Tiny Beautiful Things* (Long Wharf), *The Aliens* (Chester Theatre Company), the Cowardly Lion in a drag for *The Wizard of Oz* starring Drag Race superstar Rosé (Geva Theatre), and *Breaking the Binary* Theatre Festival. Film and TV credits include *Instinct* (CBS) and *Fry Day*. Pauli is a Lyme disease survivor and advocates for national legislation through Project Lyme and the Center for Lyme Action. Pauli received their M.F.A. from NYU. [@pauli.amorous](https://www.instagram.com/pauli.amorous)



**GEORGE ANTHONY RICHARDSON** (*Egeus, Snug/Joe, Matthew, Others*) is a New York-based actor, director, and writer originally from

Merced, California. A graduate of The Juilliard School's Drama Division (Group 50), his stage credits include *Topdog/Underdog* (Broadway and Palm Beach Dramaworks), *King James* (TheaterWorks Hartford), and *Blue Door* and *Cardboard Piano* (Juilliard). He made his Off-Broadway directing debut at 59E59 Theaters in 2022. A 2021 finalist for the Warner Bros. Television Actors Showcase, George also writes and creates film; his short *Inhuman Tethers* was nominated for Best Short Film at the Big Apple Film Festival.



# LASER ENGRAVING SERVICES

PERSONALIZED PRODUCTS WITH YOUR NAME, LOGO OR CUSTOM DESIGN



Awards · Plaques · Trophies · Apparel · Placards  
Fiber Laser Engraving · Sublimation · Signs · Promo  
Tumblers · Gifts · Name Badges · Graphic Design

## WHY CHOOSE US?

30+ YEARS IN BUSINESS

COMPETITIVE PRICES

SATISFACTION GUARANTEE

LOCAL CUSTOMER SERVICES

10% OFF YOUR FIRST ORDER!

CALL US TODAY

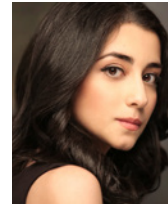
**805-658-2139**

[www.customawardsventura.com](http://www.customawardsventura.com)

## ABOUT THE ARTISTS | Creative Team

RUBICON THEATRE COMPANY

WINTERFEST 2025



**NIKKI MASSOUD** (Playwright, Great Expectations) is an Iranian-Canadian-American writer and performer.

She is honored to be collaborating with The Acting Company as a writer for the first time. She is a recent 2050 Fellow at New York Theatre Workshop and a Roundabout Underground Resident Playwright. In addition to The Acting Company, she is a commissioned playwright with Noor Theater and Atlantic Theater Company and has recently developed work with The Ground Floor/Berkeley Rep and Fault Line Theatre. Her recent acting credits include television roles on *Life and Beth* (Hulu) and *Love Life* (HBO Max) and roles at the Guthrie Theater and the Goodman Theatre. Nikki is the Audie Award-winning narrator of over 80 audiobooks, available on Audible. She attended Georgetown University and BADA and received her M.F.A. from Brown University/Trinity Rep.

classical texts, as well as original work. Select recent productions include *The Comedy of Errors*, *Hamlet*, *Othello*, *Julius Caesar*, *Macbeth*, *You/Emma* by Paz Pardo (an adaptation of *Madame Bovary*), *Exposure* by Laura Zlatos (an exploration of the life and work of Francesca Woodman), *Bones in the Basket* (an original adaptation of Russian Fairy Tales), *Middletown* by Will Eno, *Breath of Kings* (his adaptation of *Richard II*, *Henry IV*, and *Henry V*), *Blacktop Sky* by Christina Anderson, and *The Droll* (or, a play about the END of theatre) by Meg Miroshnik. He holds an M.F.A. in Directing from the Yale School of Drama where he also served as Artistic Director of the Yale Cabaret.



**RISA BRAININ** (Director, *A Midsummer Night's Dream*) is a freelance director and Founder/Artistic Director of LAUNCH PAD at UC

Santa Barbara featured in *American Theatre* magazine for its innovative contribution to new play development. Risa served as Artistic Director of Shakespeare Santa Cruz, Associate Artistic Director for both Kansas City Repertory Theatre and Indiana Repertory Theatre, and Resident Director and Associate Company Director at the Guthrie Theater. Other directorial credits include plays at American Players Theatre, Actors' Theatre of Louisville, Alabama Shakespeare Festival, Cincinnati Playhouse in the Park, Clarence Brown Theatre, Denver Center Theatre, Great



**DEVIN BRAIN** (*The Acting Company Producing Artistic Director, and Director, Great Expectations*) has held increasingly significant roles at

The Acting Company since starting as Staff Repertory Director during the organization's 2012-2013 Season. In his own artistic practice, Devin is a freelance stage director specializing in contemporary productions of

Lakes Theater, Gulfshore Playhouse, Idaho Shakespeare Festival, Milwaukee Repertory Theatre, Mixed Blood, Pittsburgh Public Theater, Red Bull Theatre, Repertory Theatre of St. Louis, Syracuse Stage, and the United Solo Festival, among others. A graduate of the Carnegie Mellon University Drama Program, Risa is a member of the National Theatre Conference and the College of Fellows of the American Theatre.

**TANYA ORELLANA** (*Scenic Designer*) designs performance spaces for theatre, opera, and immersive experiences. Select credits include *Littleboy/Littleman* (Geffen Playhouse); *Don't Eat The Mangos* (The Huntington); *What Became of Us* (Atlantic Stage 2); the Mexico Premiere of *Angels in America* (UNAM); *Derecho* (La Jolla Playhouse); *Mother Road* (Berkeley Rep); *As You Like It* (Oregon Shakes); *Fefu and her Friends*, *Big Data*, and *Private Lives* (ACT); *Where Did We Sit on the Bus* (Denver Center); *For The People* (Guthrie Theater); *Stew and One of the Good Ones* (Pasadena Playhouse); and *Alma* (The Kirk Douglas). Tanya is engaged in a long-term collaboration with Virginia Grise; *Rasgos Asiáticos* - a traveling scenic installation using sound, light, and objects to conjure narratives of immigration and migration in the U.S.-Mexico borderlands. She has an M.F.A. from CalArts and received the 2016 Princess Grace Fabergé Theatre Award. [tanyaorellana.com](http://tanyaorellana.com)

**VALÉRIE THÉRÈSE BART** (*Costume Designer, Great Expectations*) previously designed *Macbeth* for TAC. Her regional theatre credits include *Jane Eyre* (Alley Theatre); *Into the Woods*, *Dial M for Murder* (Guthrie); *Birthday Candles* (Scenic, Cincinnati Playhouse); *Vietgone* (Alley Theatre, Denver Center); and the World Premieres of *It's Christmas, Carol!* (Oregon Shakespeare Festival), *The Song of Summer* (Trinity Repertory), *The Great Leap* (Denver Center/Seattle Repertory), and *POP!* (Scenic, Yale Repertory). Off-Broadway, she has designed the World Premieres of *Poor Yella Rednecks* (Manhattan Theatre Club/South Coast Repertory), *Something Clean* (Roundabout), *Wives* (Playwrights Horizons), *Vanity Fair* (Pearl Theatre), and the NYC Premiere of *Little Women* (Primary Stages). Her designs for opera also include World Premieres: *The Big Swim* (Houston Grand Opera/Asia Society of Texas) and *A Thousand Acres* (Des Moines Metro Opera); *Fidelio*, *Butterfly* (Heartbeat Opera, Adaptation of Madama Butterfly), *Rigoletto* (Minnesota Opera), *Vinkensport/ Rocking Horse Winner* (U.S. Premiere for Opera Saratoga), *Listen, Wilhelmina!* (costume/scenic, Wolf Trap Opera), and *She, After* (costume/scenic, Urban Arias). Other credits include *For You, Paige* (TikTok musical) and Tina Packer's *Women of Will* (costume/scenic, nat'l/int'l tour). [valeriebart.com](http://valeriebart.com)

**DEVON PAINTER** (*Costume Designer, A Midsummer Night's Dream*) has free-lanced as a costume designer for many years at major regional theatres nationwide including the Guthrie Theatre, the Oregon Shakespeare Festival, and American Players Theatre. Devon now dedicates her time to teaching budding costume designers at Binghamton University in Upstate New York.

**ALAN C. EDWARDS** (*Lighting Design*) is a lighting designer for live performance whose work includes the World Premieres of *Kill Move Paradise* (National Black Theatre, Drama Desk nomination), *The Hot Wing King* by Katori Hall (Signature NYC), and *Sally & Tom* by Suzan-Lori Parks (The Guthrie and The Public). Other New York, regional, and international work includes Anna Deavere Smith's *Twilight: Los Angeles 1992* and *Fires in the Mirror* (Signature NYC); *Twelfth Night*, *Seize the King*, *A Midsummer Night's Dream*, and *Memnon* (Classical Theatre of Harlem); *Bluebird Memories* featuring rap-artist Common (Audible Theatre); *Syncing Ink* (@ The Apollo); *Baldwin and Buckley at Cambridge* by Greig Sargeant and *Elevator Repair Service* (The Public); *Beautiful: The Carole King Musical* (Asolo Rep); and the new musical *Calling Us Home* (Shy Music – South Africa). In 2017, he designed the World Premiere of *Harry Clarke* at the Vineyard Theatre, which garnered that season's Lucille Lortel Award for Outstanding Lighting Design. After remounting the production in 2023

at Berkeley Rep, the show transferred to London's West End. In 2024, Alan had the honor of designing the world premiere of *Gatsby: An American Myth* at the American Repertory Theatre, directed by Rachel Chavkin. The highly anticipated sold-out run received awards for Outstanding Scenic and Lighting Design, among many others. Alan is a graduate of the Yale School of Drama where he is also an assistant professor of lighting design. [alancedwards.com](http://alancedwards.com)

**SHARATH PATEL** (*Sound Design*) (he/him) works nationally and internationally focusing on experimental, commercial, academic, political, and socially conscious theatre. His design credits include work with American Rep, The Alley Theatre, The Alliance Theatre, A Contemporary Theatre, Alabama Shakes, TheatreSquared, Dallas Theater Center, Portland Center Stage, TheatreWorks of Silicon Valley, Indiana Repertory Theatre, Asolo Repertory Theatre, Seattle Repertory Theatre, Artists Repertory Theatre, Milwaukee Repertory Theatre, Yale Repertory Theatre, Repertory Theatre of St. Louis, Virginia Theatre Festival, Alabama Shakespeare Festival, California Shakespeare Festival, Cleveland Playhouse, Theatrical Outfit, Seattle Children's Theatre, Tantrum Theatre Company, Marin Theatre Company, Virginia Theatre Festival, The Contemporary American Theatre Festival, Arena Stage, Hypokrit Theatre Company, Virginia Stage Company, Geffen Playhouse, East West Players,

and CompanyONE. He holds a B.F.A. from Ohio University and an M.F.A. from Yale School of Drama. His affiliations include USA829 IATSE, Theatrical Sound Designers and Composers Association, Arts Envoy for the U.S. Department of State, and Artists Rep, where he is a Resident Artist. [sharathpatel.com](http://sharathpatel.com)

**LINDSAY JONES** (*Composer*) received Tony nominations for Best Score and Best Sound Design for *Slave Play*. Other Broadway credits include *The Nap*, *Bronx Bombers*, and *A Time to Kill*. His Off-Broadway work includes *Privacy* (The Public Theater), *Bootycandy* (Playwrights Horizons), *Feeding the Dragon* (Primary Stages), and *Top Secret* (New York Theatre Workshop). Regional credits include Guthrie, Goodman, Arena Stage, Old Globe, Chicago Shakespeare, Steppenwolf, and many others. Internationally, Lindsay has designed for venues and companies such as Noel Coward (London/West End), Royal Shakespeare Company (England), Stratford Festival (Canada), and many others. He had designed audio dramas for Disney, Marvel, DC, Penguin/Random House, Audible, and Next Chapter Podcasts. Lindsay's film/TV scoring includes HBO Films' *A Note of Triumph* (2006 Academy Award for Best Documentary, Short Subject) and over 30 other films. His awards include Webby, Signal (3), Ambies, Joseph Jefferson (7), Ovation (2), and LA Drama Critics Circle. He is the co-chair of Theatrical Sound Designers and Composers Association

and teaches Music History at the University of North Carolina School of The Arts. [www.lindsayjones.com](http://www.lindsayjones.com)

**ALEX CHOATE** (*Props Lead*) has worked in film, TV, and theatre for the past 23 years, and has worked for Marvel, Disney, DC, Cirque Du Soleil, and more. He now finds himself the Technical Theatre Teacher at Santa Susana High School, the model program for the State of California, helping the next generation of technicians and designers create the world they wish to see, while elevating what they feel is possible.

**DUANE BOUTTÉ** (*Voice & Text Coach*) returns to The Acting Company having appeared in TAC's '91-'92 production of *A Midsummer Night's Dream* – his first New York job. Other acting credits include the original Broadway company of *Parade*, the 1994 Tony Award-winning revival of *Carousel*, and landmark films *Stonewall* and *Brother to Brother*. Duane trained at UCLA and the National Theatre Conservatory; and has taught at Illinois State University (ISU), Brooklyn College, The New School, and National Theatre Institute. He's coached productions and workshops for The Acting Company, Woodward Shakespeare Festival, Ramapo College, and ISU. In his private studio, Duane helps prepare actors for roles on Broadway and nationwide. Directing credits include Neil LaBute's *Appomattox* (World Premiere), *Home* (Rep Stage), *The Merry Wives of Windsor* (Worcester Shakespeare), *The*

*Winter's Tale*, *Othello*, *Fences*, *Stalag 17*, *Everybody*, *Cabaret*, and more. Favorite roles include Mercutio (OSF), Bayard Rustin (Public Theater, Berkeley Rep), Dracula (Bannerman Island), and Orestes (inaugurating Berkeley Rep's RODA Theatre).

**CHRISTINA MCCARTHY** (*Choreographer*, *A Midsummer Night's Dream*) (she/they) is Director of Performance at UC Santa Barbara in the Department of Theatre and Dance where they teach contemporary dance technique, choreography, digital editing for dance on film, and puppet design and construction. Their creative work is situated at the intersection of theatre and dance in physical storytelling. Recent collaborations include *Macbeth* with Orlando Shakes and *Henry VI, Parts 1, 2 and 3* for the York, UK International Shakespeare Festival with director Irwin Appel. In 2025 at UC Santa Barbara, they worked as a choreographer and intimacy coordinator for *Strange Birds* with director Risa Brainin and *The Threepenny Opera* with director Annie Torsiglieri. As a movement consultant, they worked with director Pasha Rudnick on *acts of faith* for Local Theater Company in Boulder in 2024. They collaborate regularly with State Street Ballet, creating large scale puppets for various productions.

**ELI LYNN** (*Fight Choreographer & Intimacy Coordinator*) (they/them) is an inescapably queer actor, award-winning fight director, and IDC certified Intimacy Director. Recent FD/

ID work includes *The Comeuppance* (Wilma/Woolly Mammoth); *Little Shop of Horrors*, *Peter Panto*, *Raisin in the Sun* (People's Light); *The Play That Goes Wrong* (1812 Productions/PA Shakespeare Festival); and feature film *Scabs* (Tommy Butler). Their work has been seen at numerous regional theatres, including The Wilma, Arden Theatre, PA Shakespeare Festival, People's Light, InterAct Theatre, Theatre Exile, Philadelphia Theatre Co., and Philadelphia Artists Collective, among many others. They also choreograph and teach workshops at regional universities, including UPenn, Princeton, Temple, Rutgers (Camden), Villanova, and Arcadia. They have studied stage combat for over 15 years and are a certified Advanced Actor Combatant with five international organizations. They are also an Artistic Associate at Philadelphia Artists' Collective. "Love always" to V. [Eli-Lynn.com](http://Eli-Lynn.com). [@EverInMotley](https://www.instagram.com/EverInMotley)

**KRISTIN LEAHEY, Ph.D.** (*Dramaturg*, *Great Expectations*) is an Assistant Professor at Boston University and the Associate Artistic Director of Women's Project Theatre. She dramaturgs and produces nationally and internationally. Leahey has several book and article projects in publication. She recently completed a Fulbright with The Abbey, Ireland's National Theatre.

**KATE PITT** (*Associate Director*) has served as an associate or assistant director for *Richard II*, *Henry IV*, and *Henry V* at the Guthrie Theater (dir.

Bring the Joy  
of the Holidays to You!

# THE RUBICON CHRISTMAS CAROLERS

Sponsored in Part by Chuck Kasper



## Hire Our Christmas Carolers Today!

Surprise your guests with Rubicon's Holiday Carolers dressed in Victorian garb for your party, business, or community event. Performed by our students with songs you select from a list.

PLEASE EMAIL:  
slaporte@rubicontheatre.org

Joe Haj); *Dig* with Primary Stages (dir. Theresa Rebeck); *King Lear* with Shakespeare Theatre Company (dir. Simon Godwin); *Romeo and Juliet* (dir. Leah C. Gardiner) and *The Three Musketeers* (dir. Kent Gash) with The Acting Company; *The Way of the World* with Folger Theatre (dir. Theresa Rebeck); and directed *Henry V* at MIT. She provided dramaturgy for *American Apollo* with Des Moines Metro Opera, is Resident Dramaturg for the Vanguard Initiative at Chicago Opera Theater, and Resident Artist at American Lyric Theater. Other credits include *The Comedy of Hamlet!* (a prequel) with the Reduced Shakespeare Company and *Stick-Figure Hamlet* with the comic "Good Tickle Brain." She has written essays and comedy for The Arden Shakespeare, SDC Journal, and McSweeney's, and spent four years producing public programs at the Folger Shakespeare Library. Kate is a member of Wingspace and an SDC Associate. B.A., Yale.  
[www.katepitt.com](http://www.katepitt.com)  
[shakespearenews.com](http://shakespearenews.com)

**JESSICA FORELLA** (*Production Stage Manager*) (she/her) is delighted to be joining The Acting Company on tour this season. Favorite past credits include *Shelter* and *NONE: A Practical Breviary* (NYSAF); *A Midsummer*

*Night's Dream*, *Twelfth Night*, and *Malvolio* (The Classical Theatre of Harlem); *Twelfth Night* and *Richard III* (Chicago Shakespeare Theater); *Fun Home* and *Mies Julie* (Victory Gardens Theater); *The Polar Express* (Rail Events Productions); *The Hound of the Baskervilles* and *James and the Giant Peach* (Theatre-Hikes); *Numbers Nerds* (CPA Theatricals); *Million Dollar Quartet* (Barter Theatre); *Burn the Floor* (Norwegian Cruise Lines); *The Hunchback of Notre Dame* (RWCMD); *A Small Oak Tree Runs Red* (Congo Square Theatre); and *Sondheim on Sondheim* (Porchlight Music Theatre).

**LIZ HETZEL** (*Assistant Stage Manager*) is an NYC-based stage manager, director, and artistic collaborator who seeks to create work grounded in themes of humanity, connection, and identity. With a passion for Shakespeare and classics, Liz is overjoyed to join The Acting Company for their 2025-2026 Tour. Recent credits include *24 Hour Plays: Nationals* (SM), *Kowalski* (AGT, APM), *Romeo & Juliet* (938collective, Dir.), *Designs for Living* (938collective/Boyzwithapple, PSM), *Troilus and Cressida* (Prague Shakespeare Company, AD), and *Macbeth* (Vassar College, Dir.). Liz holds a B.A. from Vassar College.

 RUBICON THEATRE COMPANY

# CROSSROADS

MOMENTS THAT CAN CHANGE EVERYTHING  
2025/2026 SEASON

It's Not Too Late to Cross the Rubicon!  
Subscriptions Make a Great Holiday Gift!

SUBSCRIBE NOW TO A 3- OR 4-SHOW  
PACKAGE AND SAVE!

## THE 39 STEPS

FEB 11 – MAR 1, 2026  
*Madcap Comedy*

Based on Alfred Hitchcock's classic film, this hilarious fast-paced farce follows an ordinary man who, after a chance encounter, is thrust into a world of mystery and mayhem.

## SOMEBODY TO LOVE

MAR 25 – APR 12, 2026  
*World Premiere '70's Rock Musical*

A funny, heartfelt new World Premiere musical with the songs we listened to on vinyl about four friends who meet in college, chase their dreams, hit detours, and rediscover love.

## Eleanor

MAY 13 – 31, 2026

*Riveting One-Woman Drama*  
In this inspiring portrait, Eleanor Roosevelt journeys from reluctant public figure to a woman who changes history and redefines what's possible.

## RAGTIME THE MUSICAL

OCT 21 – NOV 8, 2026

*Tony Award-Winning Musical*  
Three American families stand at the crossroads of change in this soaring and timely musical about justice, hope, and the promise of a new century.

## SUBSCRIBER BENEFITS TO ENHANCE YOUR JOURNEY

Subscribe to the remaining shows in our season—our favorite stories filled with bold choices, unexpected twists, and the enduring power of love, hope, and courage.

This season, Rubicon invites you to explore the powerful, unpredictable moments that shape our lives. And as a subscriber, *you stand at a crossroads of your own*—one that offers not just great theatre, but greater value, connection, and convenience. As we explore a season built around life's turning points and transformative choices, your subscriber benefits are designed to make each experience more rewarding, flexible, and personal.

### SAVE AND SHARE

Enjoy 15% discounts on your season tickets, \$10 during presale for Ventura LIVE! events, and \$5 off additional tickets purchased for friends and family for mainstage shows—so you can share meaningful moments with those closest to you.

### STAY IN THE KNOW

Get advance notice of intimate readings of new works, added concerts, and other special artistic offerings that deepen your connection to the creative process.

### GUARANTEED SEATS

Your subscription ensures you have prime seats – even for popular performances that sell out.

### YOUR SEAT, ALL SEASON

Keep your preferred seats for the entire season, with first opportunity to upgrade each year.

### FLEXIBLE EXCHANGES

Life shifts. One free exchange per show with 72 hours' notice lets you adapt with ease when your schedule takes a new direction.

Your subscription offers MORE than great theatre—it gives you a front-row seat to the moments that move us, in a season inspired by the choices that shape our lives.

805.667.2900 | [www.rubicontheatre.org](http://www.rubicontheatre.org)

SCAN TO SUBSCRIBE:



## RUBICON ARTISTIC AND PRODUCTION STAFF

RUBICON THEATRE COMPANY

WINTERFEST 2025



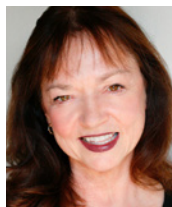
### J. SCOTT LAPP

(Producing Artistic Director) is an award-winning director, a proud member of the SDC and the incoming

Producing Artistic Director at Rubicon Theatre Company. He has worked across the United States as well as internationally in London, Denmark, Japan, and Canada. He is an alumnus of the Directors Lab West and a 2011 SDC Emerging Artist. He is the recipient of the 2022 Craig Noel Award for Outstanding Direction and Outstanding New Production for *Witnesses*. Recent directorial projects include the U.S. premiere of a reimagined production of *Bonnie & Clyde* at Rubicon and the 2025 revival of *Murder for Two* that played Tokyo and a number of other Japanese cities. He also served as the Associate Director on the World Premiere West End production of Dreamwork's *The Prince of Egypt* that can now be viewed on BroadwayHD and various streaming services. Associate/Assistant Directing credits include Broadway: *Bonnie & Clyde*; International: *The Prince of Egypt* (West End, Fredericia Teater); Off-Broadway: *Murder for Two* (New World Stages), *Freedom Riders* (NYMF); National Tour: *Murder for Two*, *Xanadu*. Regional: *Disney's The Hunchback of Notre Dame* (Paper Mill Playhouse, La Jolla Playhouse); *Rain, Into The Woods*, *Good People*, *A Room With a View* (The Old Globe); *Secondhand Lions* (5th Avenue). Selected directing credits

include International: *Murder for Two* (Japan, Calgary), Regional: *Bonnie & Clyde, the Musical* (U.S. Premiere), *The Curious Incident of the Dog in the Night-Time* (San Diego Premiere), *Bottle Shock! The Musical* (World Premiere), *Witnesses* (World Premiere), *Once*, *Joseph and The Amazing Technicolor Dreamcoat in Concert* (CCAETheatricals), *Disney's Mary Poppins, Freaky Friday* (Moonlight Amphitheater). Jeremy has worked for several major regional theatres including 5th Avenue, Arizona Theatre Company, Asolo Repertory Theatre, Bucks County Playhouse, Denver Center Theatre Company, The Cape Playhouse, La Jolla Playhouse, NC Theatre, The Old Globe, Paper Mill Playhouse, Pasadena Playhouse, Pittsburgh CLO, Portland Center Stage, Saint Michael's Playhouse, TheatreWorks Silicon Valley, and others. He is a recipient of Noel Craig, PAMTA, Inland Theatre League, Patté, National Youth Theatre, Billy, and Director's Choice awards. Much love to Holly for being his sounding board, rock, and lifelong partner.

IG: @jscottlapp



### KARYL LYNN

**BURNS** (Producing Artistic Director) founded Rubicon with husband James O'Neil in 1998 and has overseen more

than 175 productions for the company, including the World Premieres of *23.5 Hours/Conviction* by Carey Crim (a co-production with Bay Street Theater and

## RUBICON ARTISTIC AND PRODUCTION STAFF

RUBICON THEATRE COMPANY

WINTERFEST 2025

the Royal Manitoba Theatre Centre); *Daddy Long Legs* (which has traveled to 15 U.S. cities and 4 countries and is licensed by MTI); *The Best is Yet to Come: The Music of Cy Coleman* (NY Drama Desk Award); *Lonesome Traveler* (Drama Desk and Outer Critics Circle nominations); *My Antonia* adapted and directed by Scott Schwartz with music by Steven Schwartz; *It's Only Life* by John Bucchino directed by Daisy Prince; and *Hello! My Baby* by Cheri Steinkellner. Karyl Lynn partnered with Daryl Roth to produce the Off-Broadway production of *Wiesenthal* by Tom Dugan, directed by Jenny Sullivan (Drama Desk and Outer Critics Circle nominations). For over a decade prior to starting Rubicon, Karyl Lynn was CEO of State of the Arts, an arts marketing and management firm. Clients included Ventura Music Festival, New West Symphony, Ensemble Theatre Company, PCPA Theaterfest, Theatre League, Broadway Producer Normand Kurtz, and Tony Award-winning playwright Dale Wasserman. Karyl Lynn worked with students from Oak Meadow School who received the United Nations "Global 500" Award for their work on environmental issues. For The Dream Foundation, she produced a PSA directed by Mimi Leder and starring Jeff Bridges. As an event planner, Karyl Lynn and her staff coordinated the 10th Annual "Cool Comedy, Hot Cuisine" with Robin Williams, Howie Mandel, and Bob Saget, emceed by Bob Costas; a concert for Scleroderma Research with singer Sheryl Crow at the Santa Barbara Bowl; and several charity film

premieres. For Capps for Congress, she managed a 400-person luncheon with Hillary Clinton as keynote speaker. Karyl Lynn is also an award-winning actor and sound designer.

**JAMES O'NEIL** (Rubicon Co-Founder and Artistic Director, Emeritus) is Co-Writer/Director of *A Cowboy Lullaby* which completed a successful run at Rubicon last fall. He is also the Writer/Director of *Lonesome Traveler: A Journey Down the Rivers and Streams of American Folk* (NY Drama Desk and Outer Critics Circle nominations), which premiered at Rubicon as a co-production with Laguna Playhouse and then transferred to 59E59 Off-Broadway. Jim's other Rubicon directing credits include *I Dig Rock and Roll Music* (Writer/Director), *King Lear*, *Man of La Mancha*, *Fiddler on the Roof* (Indy Award), *Jesus Christ Superstar*, *A Delicate Balance*, *The Diary of Anne Frank*, *The Night of the Iguana*, *A Streetcar Named Desire* (Indy Award), *Driving Miss Daisy* (NAACP Award - Best Direction of a Play), *All My Sons* (L.A. Ovation Award - Best Production of a Play), *Sylvia*, and *Gem of the Ocean*. Under Jim's artistic leadership, Rubicon accepted the NY Drama Desk Award for *The Best is Yet to Come: The Music of Cy Coleman*, conceived and directed by David Zippel. Other directing credits include *The Lion in Winter*, *The Petrified Forest*, *Inherit the Wind*, and regional premieres of *A Coupla' White Chicks Sitting Around Talking*, and *The Mystery of Edwin Drood*. While on staff at Landmark

## RUBICON ARTISTIC AND PRODUCTION STAFF

RUBICON THEATRE COMPANY

WINTERFEST 2025

Entertainment Group, Jim directed a multi-million-dollar animatronics/special effects show in Japan, supervising all aspects of production and creative direction for themed attractions in Sanrio's Harmonyland. As an actor, Jim's Rubicon credits include the title role in *Clarence Darrow*, Dr. Prospero in *Return to the Forbidden Planet*, Claudius in *Hamlet*, Stage Manager in *Our Town*, Michael in *Dancing at Lughnasa*, and multiple roles in *The Turn of the Screw*. He appeared for two years as Pontius Pilate in the National Tour of *Jesus Christ Superstar* starring Ted Neeley, Carl Anderson, and Irene Cara. Regional credits include John Adams in *1776*, The Duke/Dr. Carrasco in *Man of La Mancha*, and Adam in the first workshop of Dale Wasserman's *Western Star*. Jim may be heard singing the title role in *Quasimodo: Prince of Fools* and as Tsar Nicholas in *Rasputin* on concept albums by Michael Rapp.

**STEPHANIE A. COLTRIN** (*Associate Artistic Director*) is an award-winning producer and director with over 200 productions to her credit, ranging from musicals to Shakespeare to World Premieres, from comedies to dramas. Directing credits for Rubicon Theatre include *Almost, Maine*, *Buyer and Cellar*, *Taking Sides*, *Sylvia*, *Moonlight and Magnolias*, and the Ovation-recommended production of *The Last Five Years*. Stephanie was formerly the Artistic Director of CLO of South Bay Cities and the Hermosa Beach Playhouse,

helming a ten-show season at both venues, and directing productions including *Miss Saigon* (Ovation winner for Best Musical, earning her a directing nomination), *Seussical the Musical* (Broadway World Award for Best Director), *Jesus Christ Superstar* (Stage Scene L.A. Award, Director), *Oklahoma, Bark!*, *She Loves Me*, and *The 1940's Radio Hour*. Other directing credits include *A Midsummer Night's Dream*, *The Taming of the Shrew*, *Godspell*, *Barefoot in the Park*, *Who's Afraid of Virginia Woolf?*, *Private Lives*, *Steel Magnolias*, *Blythe Spirit*, *Art*, *The Green Room* (World Premiere), and *Quilters*. She is also Co-Artistic Director for Shakespeare by the Sea (a summer Shakespeare festival touring two shows in rep to more than 24 locations throughout Southern California), having adapted and directed *Henry IV* (both parts), *Henry V*, *The Winter's Tale*, *Macbeth*, *Othello*, *Hamlet*, *The Tempest*, *Julius Caesar*, *King Lear*, *Henry VI Parts 1 & 2*, and others. For her work with SBTS, Stephanie was interviewed on PBS as well as for a Folger Shakespeare Library podcast. [www.stephaniecoltrin.com](http://www.stephaniecoltrin.com)

**DAVID ELZER** (*Publicist*) in addition to representing Rubicon, works with Actors Co-op, Celebration Theatre, Circle X Theatre Company, The Colony Theatre Company, 5-Star Theatricals, Independent Shakespeare Co., Laguna Playhouse, La Mirada Theatre for the Performing Arts, NoHo Arts Center Ensemble, Ojai Playwrights Conference, Open Fist

## RUBICON ARTISTIC AND PRODUCTION STAFF

RUBICON THEATRE COMPANY

WINTERFEST 2025

Theatre Company, Road Theatre Company, Theatre of NOTE, Theatre Tribe, and VS. Theatre Company. As a producer, he has twice won the L.A. Drama Critics Circle Award and was also honored to receive the Circle's prestigious Joel Hirschhorn Award for Outstanding Achievement in Musical Theatre. David has been nominated for six Ovation Awards (winning two), and has also won Drama Desk, *L.A. Weekly*, and Garland Awards for his producing and writing efforts. Productions include the Celebration Theatre production of *Justin Love*, which he conceived, commissioned and co-wrote; and *The Color Purple*. David also produced the World Premiere musical *Having It All* at the NoHo Arts Center and Laguna Playhouse; the World Premiere play *Girls Talk* starring Brooke Shields; the record breaking, 19-month run of *The Marvelous Wonderettes* and *Winter Wonderettes* at the El Portal Forum Theatre; and the smash-hit *Life Could Be a Dream*, which ran for a year at the Hudson Mainstage in Hollywood. [www.DemandPR.com](http://www.DemandPR.com)

**ERIN NICOLE EGGERS** (*Production Manager*) is a producer, director, and AEA stage manager originally from Milwaukee. Erin previously served as Production Manager at Paramount Theatre in Aurora, IL, where she was integral to the opening and maintaining of a brand new immersive theatre that has been home to a critically acclaimed, open-ended run of *Million Dollar Quartet* since summer of 2024. Other producing credits at Paramount

include *True West*, *The 25th Annual Putnam County Spelling Bee*, *Peter and the Starcatcher*, *An Act of God*, the regional premiere of Disney's *Frozen*, *Waitress*, *The Full Monty*, and a circus spectacular version of *Cats* (yes, that *Cats*). Erin is dedicated to centering joy in the artistic process and building community, and she is grateful to have found a new artistic home in Ventura after having the pleasure of collaborating with theatres such as ACT Seattle, American Players Theatre, Musical Theatre West, A Noise Within, Renaissance Theatreworks, and TheatreX in Cairo, Egypt. "With love and gratitude to Janet and Randy Peterson and her soulmates at Paramount: Ellen Dillenburg, Yesenia Esparza, and Adam Dooley." IG: @enkarenina

**JIMMY CALLAHAN** (*Technical Director*), after his first taste of theatre assisting the previous technical director and working backstage for *The Realistic Joneses* at Rubicon, continued with productions including *Dark of the Moon*, *The World Goes Round* and "*A*" *Train*. He was also part of the Rubicon production of *Eisenhower: This Piece of Ground*, traveling with the show to Santa Barbara and Olney Theater Center in Maryland. He has now taken on the role as Technical Director here at Rubicon Theatre.

GO BEHIND-THE-SCENES

# RUBICON *Jewel Club*



Rubicon’s Jewel Club is a three-year sustaining membership program offering various behind-the-scenes benefits.

Membership is a great way to make new friends with similar interests, meet many of the artists involved in directing and designing Rubicon productions, and gain insight into the creative process. Members attend directors’ previews in private homes and receive other special perks.



For more information, please contact  
Kimiko Tokita, Development Manager  
[ktokita@rubicontheatre.org](mailto:ktokita@rubicontheatre.org)  
or at 805.667.2912, ext. 226.

The listing below reflects memberships received from November 1, 2024 to October 31, 2025. Gifts received after October 31, 2025 will be included in the next program. To become a new Jewel Club member, or to notify us regarding any errors or omissions, please contact Kimiko Tokita, Development Manager, at 805.667.2912, ext. 226, or e-mail her at [ktokita@rubicontheatre.org](mailto:ktokita@rubicontheatre.org).

## GOLD COIN

(\$10,000)

Susan Van Abel & Eric Oltmann  
Lori & Dr. Richard Reisman

## DIAMOND

(\$6,000)

Nancy & Richard Francis  
Leah Palmer-Zondlo & James Zondlo

## EMERALD

(\$3,000)

Rozanne & Randy Haege  
Jeannette & Dennis Longwill  
Harriet Clune & Rich Stewart  
Laurie & Steven Weiss

## RUBY

(\$1,250)

Jeanne P. Adams, Ph.D  
Donna Burger  
Patricia Butler  
Cherie & Michael Eulau  
Lynda & Fred Evans  
Judi & Manny Garcia  
Lynn & Al Geller  
Barbara Gural & Tom Steinmetz  
Randy Encinas & Doug Halter  
Mary Harrison  
Herb Hemming

Tom Hinkle  
Jon Ives  
Paula & Scott Rushing  
Julie & Don Morath  
Diana Troik  
Jody Shapiro  
Rebecca & Jeffrey Smith  
Jeff & Valerie Snider  
S. Blake & Charles Wade  
Nancy Rasmussen & William Wayson  
Stephanie & Kurt Zierhut

Susan Van Abel, *Chair*

## 2025–2026 BOARD OF DIRECTORS

RUBICON THEATRE COMPANY

WINTERFEST 2025

### OFFICERS

#### DOUG HALTER

##### **President**

Owner, Halter-Encinas Enterprises  
Deputy Mayor, City of Ventura

#### JEANNE P. ADAMS, PH.D.

##### **Vice President**

Professor/Educational Consultant

#### ROSA LEE MEASURES

##### **Honorary Chair**

Real Estate and Investment Manager  
Former Deputy Mayor, City of Ventura

#### STEPHANIE ZIERHUT

##### **Secretary/Treasurer**

Retired Educator

### MEMBERS-AT-LARGE

#### MOUSTAPHA ABOUSAMRA, MD

Doctor, Retired Neurosurgeon  
Ventura County Neurosurgical Associates

#### CLAIRE BOWMAN

Retired Educator/Owner  
Ripple Property Management

#### ABRA PILAR FLORES

Retired Educator/Designer

#### JEFFREY S. GROVE, MD

D.O., FACOFP dist.  
Suncoast Family Medical Associates

#### MICHAEL JACKOWITZ

Producer  
WitzEnd Productions

#### MATT D. MARQUIS

CEO  
Pacifica Hotels

#### TOM PARKER

Assistant Special Agent in Charge (Ret.)  
Los Angeles FBI Field Bureau/  
Owner, Emerald Isle Security

#### RICHARD A. REISMAN, MD, FACOG

Board Certified Obstetrician & Gynecologist  
Community Memorial Hospital

#### SCOTT RUSHING

Owner  
Rushing Real Estate & Investment Co  
& Tri County Ag Pros

#### DAVID SIMPSON

Former Owner/President  
The Scenic Express

### EX OFFICIO

#### ROBERT M. BERGER

Legal Advisor

#### SHELLY BRAUN

Community Volunteer  
Board of Advisors Liaison

#### SUSAN VAN ABEL

Community Volunteer  
Jewel Club Liaison

## 2025–2026 BOARD OF ADVISORS

RUBICON THEATRE COMPANY

WINTERFEST 2025

#### SHELLY BRAUN

##### **Chair**

Community Volunteer

#### BRUCE BARRIOS

Professional Mobile DJ  
Bruce Barrios Productions

#### KIM BELL

Vice President, Client Connections  
Corporate Inclusion Strategies  
The ActOne Group

#### MARCELL BRICKEY

English Teacher  
Oxnard High School

#### SUSAN CLARK

Actor/Producer

#### KEVIN M. CLERICI

Executive Director  
Downtown Ventura Partners

#### HARRIET CLUNE

Retired Real Estate Broker/Manager  
Coldwell Banker

#### KENNETH S. COLLIN

Retired Businessman

#### FREDDIE CONTARINO

Community Volunteer

#### CHERIE EULAU

Retired Educator

#### REBECCA FOX

Retired Educator

#### NANCY BUTLER FRANCIS

Retired Land Use Planner  
County of Ventura

#### MYRON HARRISON

CEO

Harrison Industries/E.J. Harrison and Sons

#### NANCY ISRAEL

Community Volunteer

#### KELLY-MARIE JONES

Regional Sales Manager  
Point Broadcasting

#### CATHERINE LEE

Senior Living Director

#### TRACY LONG, PH.D.

Director  
Ventura Botanical Gardens

#### MATTY PARK

Retired Data Analyst  
Bank of America

#### MIKE POWERS

Founder/CEO  
Coolpath

#### LANE STALBIRD

Semi-Retired Business Systems Consultant

#### RICH STEWART

Retired Mortgage Lender  
Washington Mutual Bank

#### SACHEEN SWAN

Civil Law Clerk  
Ventura County Counsel

#### SUSAN VAN ABEL

Community Volunteer

RUBICON THEATRE COMPANY

WINTERFEST 2025

The listing below reflects donations made between November 1, 2024 to October 31, 2025. Donations made after October 31, 2025 will be included in the next program. To make a donation, or to let us know of any errors or omissions, please contact Kimiko Tokita, Development Manager, at 805.667.2912, ext. 226, or e-mail her at [ktokita@rubicontheatre.org](mailto:ktokita@rubicontheatre.org).

**\$50,000+**

|  |                               |
|--|-------------------------------|
| Anonymous*   | Willette and Manny Klausner   |
| Ben and Julia Namba Fund to Benefit Rubicon Theatre* | The Manitou Fund              |
| City of Ventura                                      | Shawn Baker and Jeff Naylor   |
| Stacey and John W. Birchfield                        | Diana Troik and Art Shaffman  |
| Mary Ann Cohen                                       | Valerie and Jeffrey Snider    |
| County of Ventura                                    | State of California           |
| Dr. Jeffrey Grove                                    | Zaruka Family Charitable Fund |

**\$10,000 – \$49,999**

|   |   |
|---|---|
| Anonymous**   | Barbara Meister                         |
| Anonymous   | Loretta and Mike Merewether             |
| Joanie and Dr. Moustapha Abousamra                            | Judith R. Nelson                        |
| Dr. Jeanne P. Adams   | Susan Van Abel and Eric Oltmann         |
| Patricia Butler   | Matty Park                              |
| Andrea and Freddie Contarino                                  | Marla McNally Phillips and Lee Phillips |
| Betty and Kirk Cruikshank                                     | Lori and Richard Reisman                |
| Mark Edelman  | Paula and Scott Rushing                 |
| Nancy and Richard Francis                                     | The Sherri and Les Biller Foundation    |
| Randy Encinas and Doug Halter                                 | David Simpson                           |
| Halter-Encinas Enterprises, Inc.                              | Smith-Hobson Foundation*                |
| The Jack Oakie and Victoria Horne Oakie Charitable Foundation | Prudence Fraser and Robert Sternin      |
| Nora McNeely Hurley and Michael Hurley                        | Theatre League - Kansas City            |
| Jordan Laby and The Laby Family                               | Sharon and Anson Williams               |
|   | Stephanie and Kurt Zierhut              |

**\$1,000 – \$9,999**

|                                   |   |
|-----------------------------------|---|
| American Online Giving Foundation | Paul Copeland                                 |
| Anonymous                         | Margo and Jonathan Davis                      |
| Randy Adams                       | Arlene and Gerald Davis                       |
| Kathleen and Brian Back           | Jennifer Davis                                |
| Cali Baxter                       | Mary Lou and James Degraffenreid              |
| Donna and Jerry Beatty            | Nan Drake                                     |
| Kim Bell                          | Frances Elson                                 |
| Abra Flores and Ed Burnett        | Dona Eng                                      |
| Ann and Cornelius C. Bond         | Cherie and Michael Eulau                      |
| Jennifer and Marcell Brickey      | Lynda and Fred Evans                          |
| Donna Burger                      | Erik Feingold                                 |
| Sue and John Burk                 | Rebecca Fox                                   |
| Meg and Daniel Burnham            | The Harry and Judy Friedman Family Foundation |
| Betsy Chess                       | Judi and Manny Garcia                         |
| Chuck Cohen                       | Lynn and Al Geller                            |
| Ken Collin                        |   |

\*Administered through the Ventura County Community Foundation. \*\*Administered through the Santa Barbara Foundation.

RUBICON THEATRE COMPANY

WINTERFEST 2025

**\$1,000 – \$9,999 (cont.)**

|  |   |
|--|---|
| Judith Gerhart                         | Ellen Rauch Charitable Foundation                     |
| Anne Goulart                           | Robina Riccitiello                                    |
| Sandy and Don Greenberg                | Kay and Jerry Rich                                    |
| HP Media                               | J. William and Elizabeth S. Robinson Foundation, Inc. |
| Rozanne and Randy Haege                | Sharon and Richard Rockefeller                        |
| Jessica and Harvey Harris              | Darlene and John Russell                              |
| Mary and Jim Harrison                  | Rotary Club of Ventura East Foundation                |
| Myron Harrison                         | Joan Rutkowski  |
| Herb Hemming                           | Mary Schaeffer  |
| Ruth Hemming                           | Ioana Schmidt   |
| Barbara and Larry Hilburn              | Frank Serena  |
| Tom Hinkle                             | Nancy Sieh  |
| Hofer Enterprises                      | Mary Ann Simms  |
| Jon Ives                               | Rebecca and Jeffrey Smith                             |
| Marlyn Juday                           | Barbara Gural and Tom Steinmetz                       |
| Julius Guis Memorial Rotary Foundation | Harriet Clune and Rich Stewart                        |
| Chuck Kasper                           | Bill and Jeri Sutherland                              |
| Deborah Linton                         | Sacheen and Gabe Swan                                 |
| Terri and Mark Lisagor                 | Barbara Thompson                                      |
| Tracy Long                             | Anne Smith Towbes*                                    |
| Jeannette and Dennis Longwill          | Kathryn and Allen Urban                               |
| Elizabeth MacPherson                   | Ventura Music Festival                                |
| Lynda Marvel                           | Thea Vernoy   |
| Karen McLaughlin                       | Pamela Verrey   |
| Rosa Lee Measures                      | S. Blake and Charles Wade                             |
| Kathleen and Brian Meyer               | WHW Foundation  |
| Julie and Don Morath                   | Nancy Rasmussen and William Wayson                    |
| Kathleen Mulligan                      | Laurie and Steven Weiss                               |
| Madeline O'Rourke                      | Suzanne and Phil White                                |
| Eileen Ogle                            | Marilyn "Annie" Winch                                 |
| Sandy Oshinsky                         | Jody Shapiro and Aaron Zaidoff                        |
| Thomas Pecht                           | Leah and Jim Zondlo                                   |
| Diane and The Hon. Steve Perren        | Zegar Family Fund                                     |
| Doris Porch                            | Yardi Systems   |
| Alison and Peter Ratcliffe             |   |

**\$100 – \$999**

|                                |                                |                          |
|--------------------------------|--------------------------------|--------------------------|
| Anonymous                      | Joan Barminski                 | Paul and Dell Bishop     |
| Dixie Adeniran                 | Penelope Barnds                | James Bjelde             |
| Jane Advani                    | Leslie and Bradley Barnes      | Diane Blau               |
| Denise and Wendell Allen       | Mary Basolo                    | Nancy Bocovich           |
| Brooke and Everard Ashworth    | Kathleen Baushke               | Inga and Jim Boldt       |
| Mickey Babcock                 | Staci Beam                     | Josefina and James Boner |
| Murray Bader                   | Dale Belcher                   | Laura Braddock           |
| Shirley Bailey                 | Robert Benham                  | Grace Brandt             |
| Hazel Baldasti                 | Leslie Ogden and Steve Bennett | Theresa Brenner-Farrell  |
| Richard Baldwin                | Jane Berg                      | Debbie Bridges           |
| Amanda McBroom and George Ball | Roberta Bergman                | Arlene Broslow           |
| Liz and Dan Ballard            | Susan Berman                   | Karen and Kevin Brower   |
|                                | and the Help Group             | Michele and Steven Brown |
|                                |                                | Peggy and Roy Brown      |

\*A gift through The Poomer Fund administered through the Santa Barbara Foundation.

**\$100 – \$999 (cont.)**

Teresita and Donn Browne  
Colleen Bruns  
Dianna and  
Robert Burdick  
Randall Butler  
Christina Cade  
Pat Caloia  
James Carriger  
Peter Chapa  
Marcia and Mark Chamey  
David Chernof  
Elise and Gary Childs  
Society of Riders  
Motorcycle Club  
Anna Cody  
Deborah Goldberg and  
Clifford Cohen  
Ellen Coleman  
Takako Colman  
Daveta Cooper  
Dorothy and Gary Davis  
Lauri and Jim Dawson  
Barbara Dean  
Deborah E. Diamond  
Patricia and John Distad  
Julia Dixon  
Katie Dru  
Judy Dugan  
Lorraine Ebdon  
Jack Eberts  
Wanda Edwards  
Diane Ellis  
JoAnn Evans  
Paula Feinberg  
Lyn and Bruce Ferber  
Patti and Peter Finie  
Kathryn Fink  
Paul N. Finkel  
Linda Kay Fisher  
Judith and  
Mark Fleischman  
Stephanie Flint  
Terrence Foley  
Donna and  
J. Grant Fulgham  
Cindy Garcia  
Chris and Bill Garlington  
Jill and Randy George  
Holly Gerber  
Catherine and  
Cranston Gesell  
Catherine and  
Mark Ghilarducci  
Yvonne Glassey  
Kari Glynn  
Robin Goldstein  
Ellen Kampel and  
Howard Goodman  
Alyssa Gutierrez  
Linda Hadlen  
Nancy J. Hankinson  
Susan Harbold  
Lori and Gregory Harris  
Carol and Steve Hart  
Patricia Harter  
Christine and  
George Heavican  
Linda Folsom and  
Stuart Heit  
Tim and Kathy Helms  
Ellen and Patrick Henahan  
Barbara and Tony Hirsch  
Linda Hitt  
Tom and Carol Holt  
Michelle and  
Reed Horwitz  
Charlotte Hoyt  
Teri Hubert  
Tom Imming  
Donna and  
Darrell Johnson  
Zoe Iverson and  
Gib Johnson  
Carol and Edwin Jones  
Stephen Joyce  
Lisa Kadowaki  
Wanda and Otto Kanny  
Joanne Kaplan  
Martha Kazlo  
Sally and Alan Keevy  
Kelly Kennedy  
Linda Kerns  
Judy Kerr  
Joan Kievman  
Elizabeth Kinney  
Terry Kirsch  
Alan Kirschbaum  
Marjorie Kurtz  
Eileen and Paul Langelier  
Caitlin Larsen  
Edward Lay  
Harriet and Eric Leibovitch  
Marianne and  
Theodore Leitereg  
Howard Levine  
Karen Flock and  
Daniel Long  
Tracy Long  
Christine Longbine  
Lucky and Ed Lynch  
Eleanor and John Lynn  
Jennifer Macafee  
Lorrie Malloy  
Paula Markgraf  
Barbara McGraw and  
Christopher May  
Janet and James McAleney  
Douglas McAvoy  
Jill and Scott McCarty  
Julie McDonald  
Tracy McGovern  
Dan McGrath  
Donald E. McMahon  
Meredith McMinn  
Margaret Melton  
Linda and  
Jerry Mendelsohn  
Ogden Merenback  
Robert C. Meyer  
Irene Miller  
Karen Mondragon  
Joanna and  
Samuel Monroe  
Normetta Muir  
Christina and  
George Munro  
Nan Waltman and  
Hal Nachenberg  
Bob Naylor  
Mary Newbold  
Heather Nicksay  
Lindsay Nielson  
Myra Nunley  
Marietta O'Farrell  
Carol and  
Christopher Oberg  
Susan and Andrew Odette  
Stephanie Orr  
Ruth and George Owens  
Virginia and  
Samuel Panossian  
Joni Parrent  
Valerie and Stan Patscheck  
Jim Patten  
Joanne Patten  
Kathleen Paulson

**\$100 – \$999 (cont.)**

Anna and Fletcher Pavin  
Anne and Milage Peaks  
Berta and Rafael Perez  
Gene Pitman  
Susan Pollard  
Elizabeth and Jerry Ponce  
Erin and Mike Powers  
Shaune and Greg Ramirez  
Ilene and David Rapkin  
Laverne Charles Hoffman  
and Heike Reagan  
Paul Reisser  
Margery Ricards  
Dr. Mark and  
Eleanor Richman  
Ellen Robinson  
Gail R. Rolf  
Catherine Rose  
Marie Ruelas  
Kathie Hira and Paul Sagar  
Sophronia Sanders  
Mary and Sam Saputo  
Patricia Savage  
Sheryl Schmader  
Cheryl A. Schuler  
Barbara Schulman  
SEA Development, LLC  
Monica Shideler  
Karen Fritts and  
John Shwope  
Stephen G. Simms  
Shari Smith  
Karen Spoentgen  
Bruce W. Stark  
Berta and Allan Steele  
Laure Stern  
Jan Stevens  
Kate McLean and  
Steven Stone  
Aimee and Todd Stork  
Christina J. Cade and  
Richard Dale Story  
Mary Carol Stunkel  
Jenny Sullivan  
Tania and Mark Sussman  
Christine Swaiden  
Judith and Melvyn Swope  
Peter Templer  
Debra Renick and  
Greg Thayer  
Shirley Thayer  
Mark W. Thies  
Donna Thomas  
Donna Thonis  
Susan Todd-Raque  
Mary and Tim Troske  
Bernadette and  
Daniel Uhlar  
Alan Vail  
Linda Von Essen  
Nancy Waltman  
Marie Warner  
Jan and Hal Wasserman  
Eliane and Richard White  
Eileen Whitley  
Sylvia Wikholm  
Katherine Wilkinson  
Margaret and  
Duane Williams  
Rainn Wilson  
Judith and David Wittig  
Cheri Wolfe  
Joann Yabrof  
Jay Yarm  
Joan Barinski  
Mary Ellen Benedetto  
Richard Berg  
Kitty and Jerry Bokoless  
Mr. and Mrs. Ron Boring  
Diana Boydston  
Maren R. Briggs  
Bonnie Hellman Brown  
and Buzz Brown  
Susan and Gregory Brown  
Catherine Burriss  
Ginny Camarillo  
Andrea and Edward Carr  
June Chadwick  
Susan Colla  
Dale Alan Cooke  
Sharon Crane  
James Dinges  
Mary and  
James Dobrowalski  
Susan Drapkin  
John Dudik  
Sarah Dunn  
Larry Dutra  
Kathleen and  
Robert Ellison  
Nancy Fisher  
Elaine and  
William Fontana  
Anne Grupp-Kaplan  
Karen Harter  
Anyce Hency  
Elizabeth Hermes  
Linda Hull  
Mr. and Mrs. Kaplowitz  
Dana Kolb  
Linda and John Lambert  
Sharon Landecker  
Angela Landers  
Kathleen and Gart Laub  
Edward Lay  
Catherine Lee  
Kathryn Lee  
Sharon Lyle  
Charlotte Martinsson  
Joanne McDonald  
Kay McElroy  
Wilma Melville  
Lynn and  
Kenneth Merideth  
Kathleen and Brian Meyer  
Thomas Pabst  
DeDe Pierce  
Michelle Prichard  
Marjorie Pugatch  
Judith Rabin  
Ann Ramirez  
Robb Randall  
Barbara Roger  
Elizabeth and Ron Rose  
Charles Russell  
Stacia Sickle  
Allen Sobelman  
Mary Sorrelle  
Katherine Stephens-Miller  
Amy Stonestreet  
Michael Stump  
Belinda Tucker  
Nancy Vaniotis  
Vicki Ann Vierra  
Bruce and Vivian Weitz  
Kathy Wertheim  
Dan Wheatman  
Alison and Thomas Wilcox  
Hiroko Yoshimoto

**\$50 – \$99**



## LAW OFFICES OF **ROBERT M. BERGER**

For over 30 years, LORMB  
has been providing quality  
legal representation:

### **Offices:**

260 Maple Court,  
Suite 119, Ventura, CA  
805-658-0998

16830 Ventura Blvd.,  
Suite 500, Encino, CA  
818-385-1770

- Estate Planning
- Probate and Trust  
Administration
- Non-Profit Corporations
- Business Law

### **Contact Robert Today:**

[rberger@rmbergerlaw.com](mailto:rberger@rmbergerlaw.com) | [www.rmbergerlaw.com](http://www.rmbergerlaw.com)

# Passion Flowers

**805.641.1076**  
[passionflowersventura.com](http://passionflowersventura.com)  
920 East Main Street, Ventura, CA 93001

*A Special Thanks to Our  
Rubicon Jewel Club Sponsor*



## **CARPINTERIA WINE COMPANY**

FINE WINES AT DISCOUNT PRICES

805.684.7440 | [www.CARPINTERIAWINECO.COM](http://www.CARPINTERIAWINECO.COM)

4193 CARPINTERIA AVE #1, CARPINTERIA, CA 93013

 **RUBICON THEATRE COMPANY**

## **BRING a GROUP and SAVE!**

**Groups of 12 or More SAVE 10-40%  
FREE TICKET FOR THE ORGANIZER!**

Great for social and civic groups, schools,  
churches, non-profit fundraisers, family  
gatherings, reunions, birthday parties,  
neighborhood get-togethers and more!

Call Guest Services

**805.667.2900**



# YOUR INDIVIDUAL DONATIONS MAKE ALL THE DIFFERENCE

Because of your support, Rubicon has been able to serve our community with innovative storytelling, education and outreach programs, and enrichment opportunities for more than two decades. As we continue recovery after the pandemic hiatus, your help is needed more than ever to sustain the company. If you want to contribute to keeping the arts alive, please consider an individual donation.



SCAN QR CODE TO DONATE:



## OTHER WAYS TO SUPPORT RUBICON

### ▶ SPONSOR A SHOW

Contact Kimiko Tokita at [ktokita@rubicontheatre.org](mailto:ktokita@rubicontheatre.org) or at 805.667.2912 ext. 226, to find out more about our customizable sponsorship packages.

### ▶ JOIN OUR LEGACY SOCIETY

Members of the Legacy Society ensure that Rubicon's artistic and educational programs will entertain and enrich the lives of future generations of theatre-lovers. For information about making a lasting impact on the cultural life of our region, contact Karyl Lynn Burns at [klburns@rubicontheatre.org](mailto:klburns@rubicontheatre.org), or call 805.667.2912, ext. 224.

The listing below reflects donations made between November 1, 2024 to October 31, 2025. Donations made after October 31, 2025 will be listed in the next program. To make a donation, or to let us know of any errors or omissions, please contact Kimiko Tokita, Development Manager, at 805.667.2912, ext. 226, or e-mail her at [ktokita@rubicontheatre.org](mailto:ktokita@rubicontheatre.org).

## EDUCATION DONORS

- |                             |                              |                              |
|-----------------------------|------------------------------|------------------------------|
| Dr. Jeanne P. Adams         | Nancy Graham                 | Adrienne Reeves              |
| Susan Adamich               | Erica Hallahan               | Dr. Paul Reisser             |
| Kathleen Applen             | Barbara Harison              | Eleanor and Dr. Mark Richman |
| Trudy Arriaga               | Harper Family Fund           | The Riley's                  |
| Richard Baldwin             | Jessica and Harvey Harris    | Romero Family                |
| Penelope Barnds             | Linda Folsom and Stuart Heit | Janelle Rose                 |
| Sharon Bettis               | Judy Hillestad               | Robert Rubin                 |
| Marie Bleier                | Barbara and Tony Hirsch      | Paula and Scott Rushing      |
| Stephanie Coltrin Beyries   | Carol and Edwin Jones        | Leonid Sassoon               |
| Evelyne and Dirk Boon       | Julius Guis Memorial         | Lynn Sacco                   |
| Evelyn and Howard Boroughs  | Rotary Foundation            | Diana Troik and Art Shaffman |
| Educational Fund*           | Joanne Kaplan                | Kathie Hira and Paul Sagar   |
| Elya Braden                 | Chuck Kasper                 | Any Shinden                  |
| Dianna Burdick              | Mary and David Kerrigan      | Joyce Shipley                |
| Donna Burger                | Alan Kirschbaum              | Jean Smith                   |
| Abra Flores and Ed Burnett  | Jordan Laby and              | Jane and Daniel Smithson     |
| Alison Carlson              | the Laby Family              | Smith-Hobson Foundation*     |
| Eric Carter                 | Jeanne LaPorte               | Valerie and Jeff Snider      |
| Gloria and Ronald Chess     | Lorraine LaPorte             | Barry Speyer                 |
| Iris Chow                   | Tami Lee                     | Marilyn and Marty Spiegel    |
| Mary Ann Cohen              | Harriet and Eric Leibovitch  | Karen Spoentgen              |
| Andrea Contarino            | Kay Liddi                    | Amanda Squitieri             |
| Freddie Contarino           | Nancy Lincors                | Susan Stalley                |
| Donna Davies                | Cynde and Steven Magidson    | Laure Stern                  |
| Dorothy and Gary Davis      | Marianela Maldonado          | Jenny Sullivan               |
| Barbara Dean                | Lily Mallare                 | Barbara Thompson             |
| Mary and James Dobrowski    | Patricia Matthews            | Kayla Ton                    |
| Kevin Downey                | Cmdr. Scott McCarty          | Karen Trainor                |
| Susan Drapkin               | Barbara Meister              | Aubrey Traub                 |
| Linda Drevenstedt           | Vincent Melamed              | Terri Bibb and Andy Umberger |
| Peter Ellenstein            | Bonnie and Mike Mercadante   | Shonda and Eric Vielbig      |
| Lynda and Fred Evans        | Loretta and Mike Merewether  | Nancy Rasmussen and          |
| Rebecca Fox                 | Carl Morehouse               | William Wayson               |
| Lori and Gregory Frank      | Judith R. Nelson             | Eliane and Richard White     |
| The Harry and Judy Friedman | Joseph Norris                | Angie White                  |
| Family Foundation           | Joyce Nussen                 | Barbara Buevens and          |
| Judy Frith-Smith            | The Jack Oakie and           | Daniel Wiggins               |
| Cynthia Garcia              | Victoria Horne Oakie         | Joann Yabrof                 |
| Judi and Manny Garcia       | Charitable Foundation        | Tricia and Arnold Zane       |
| Rachelle Giuliani           | Eileen Ogle                  | Lindsay Zibach               |
| Kari Glynn                  | Deborah Owens                | Robert Zitsman               |
| Debbie and Ross Goldberg    | Shilo Perez                  |                              |
| Jeannie Graham              | Peter Ratcliffe              |                              |

\*Administered through the Ventura County Foundation.

Tributes are made to honor a loved one, celebrate a special occasion, or remember those who have passed away. Thank you to the following individuals for making a tribute gift to the theatre. These listings reflect one-time gifts of \$100 or more, received November 1, 2024 to October 31, 2025. To make a gift, or to let us know about a correction, please contact Kimiko Tokita, Development Manager, at 805.667.2912, ext. 226, or e-mail her at [ktokita@rubicontheatre.org](mailto:ktokita@rubicontheatre.org).

**In Honor of Joanie and Moustapha Abousamra**  
*Jody Shapiro*

**In Honor of Karyl Lynn Burns**  
*Barbara Meister  
James Witney*

**In Honor of Karyl Lynn Burns on her Birthday**  
*Penny Barnds  
Gene Pitman*

**In Honor of Karyl Lynn Burns and Jim O'Neil**  
*Jenny Sullivan*

**In Honor of Mary Ann Cohen**  
*Cheryl A. Schuler*

**In Loving Memory of Catherine "Cathy" Carras Cwiok**  
*Anonymous*

**In Honor of Marlena Daly Roberts**  
*Wanda Edwards*

**In Memory of John C. Egglar**  
*Peter Chapa*

**In Honor of Nancy and Richard Francis**  
*Eileen Whitley*

**In Honor of Nancy Francis' Birthday**  
*Eileen Whitley*

**In Honor of Richard Francis' Birthday**  
*Eileen Whitley*

**In Honor of Joseph Fuqua**  
*Barbara Meister  
Penny Barnds*

**In Honor of Joseph Fuqua and Seryozha La Porte**  
*The Brickey Family*

**In Memory of Normand Kurtz**  
*Marjorie Kurtz*

**In Honor of Seryozha La Porte, his Mother and their Story**  
*Trudy Arriaga  
Marilyn and Marty Spiegel*

**In Honor of Kay Liddi's 90<sup>th</sup> Birthday**  
*Freddie Contarino  
Rebecca Fox*

**In Memory of Edith McClintock**  
*Jane Advani*

**In Honor of Rosa Lee Measures**  
*Joni Parrent*

**In Honor of Barbara Meister's Special Birthday**  
*Judi and Manny Garcia  
Jody Shapiro*

**In Honor of Lance Nichols**  
*Anonymous*

**In Honor of Perla Ponti**  
*Jody Shapiro*

**In Honor of Sarah Dunn and Guy Rolls for Introducing us to Rubicon**  
*Ilene and David Rapkin*

**In Memory of Barry Sanders**  
*Sophronia Sanders*

**In Memory of Lorraine Serena**  
*Frank Serena*

**In Memory of Brad Setser**  
*Holly Gerber  
DeDe Pierce  
Debbie Bridges*

*Cheri and Larry Kaufman  
Mary Lester Winder  
Susan Berman and the Help Group  
Staci Beam  
Don Eng  
Janice Jacobsen  
Society of Riders Motorcycle Club  
Yardi Systems*

**In Memory and Honor of Art Shaffman**  
*Karyl Lynn Burns and James O'Neil  
Diana Troik  
Jody Shapiro  
Aaron Zaidoff*

RUBICON THEATRE STAFF

Producing Artistic Director .....J. Scott Lapp  
 Co-Founder/Producing Artistic Director ..... Karyl Lynn Burns  
 Co-Founder/Artistic Director Emeritus..... James O’Neil  
 Associate Artistic Director/Producer.....Stephanie Coltrin  
 Chief of Staff ..... Perla Medina Ponti  
 Production Manager..... Erin Nicole Eggers  
 Technical Director..... Jimmy Callahan  
 Marketing & Community Relations Director ..... Tessa Neeley  
 Guest Services Director .....Steve Braun  
 Business Manager/Finance Director..... Ellen White  
 Education & Outreach Director ..... Seryozha LaPorte  
 Summer Program Director..... Joseph Fuqua  
 Front of House Manager .....Diane Frantela  
 Development Manager ..... Kimiko Tokita  
 Guest Services Associates.....Julia Donlon, Vanessa Navarro  
 Marketing Assistant .....Spencer Zetterberg

ARTISTIC CONSULTANTS

Artistic Associates .....Thomas S. Giamario, Jenny Sullivan  
 Company Members..... George Ball, Joseph Fuqua, Joe Spano  
 Director of New Works .....Michael Jackowitz  
 Director of International Programming.....Katharine Farmer

BUSINESS CONSULTANTS

Strategic Development .....Hannah-Beth Jackson  
 Systems and IT .....Israel Galindo, Advanced Networks  
 Graphic Design and Website ..... Mance Creative, Inc.

ADDITIONAL PRODUCTION CREDITS

Master Electrician..... Claire Cleary  
 Head Audio .....Gabi Lima  
 Set Construction..... Opera Santa Fe  
 Wardrobe Crew ..... Dani Atlas, Ali Lopez  
 Backstage Crew..... Joe Lopez  
 Load In crew ..... Mike Butler, Luke Callahan, Ben Hamnet,  
 Joe Lopez, James Spruill, and Paul Voelker

REPERTORY DESIGN AND PRODUCTION STAFF

Production Manager..... Neal Goleta, Kevin Pendergast  
 Company Manager..... Kleo Mitrokostas  
 Associate Scenic Designer .....Danielle DeLaFuente  
 Associate Sound Designer .....Joshua Nguyen  
 Associate Props Lead..... Ying-Syuan Zeng  
 Props 2 ..... Jacob Holcombe  
 Assistant Costume Designer, *Great Expectations*.....Charlie Ko  
 Assistant Costume Designer, *A Midsummer Night’s Dream* ..... CK Zaki  
 Assistant Lighting Designer ..... Conor Mulligan+  
 Technical Director..... Chris Grainer  
 Wardrobe Supervisor..... Krista Grevas  
 Lighting Supervisor..... Devan Kelty  
 Sound Supervisor ..... Elena Martin  
 Tour Lighting Drafter ..... Jessica Neill  
 People, Culture, & Belonging Consultant..... Ann James  
 Production Assistant..... Taylor Bray  
 Production Assistant..... Mya Piccione  
 Key Art Illustration..... Anne Benjamin

THE ACTING COMPANY STAFF

Producing Artistic Director ..... Devin Brain  
 Executive Director of Institutional Advancement ..... Hillary Cohen  
 General Manager ..... Shelley Little  
 Line Producer.....B. Rafidi  
 Development Associate.....Natalya Ribovich

For additional bios for The Acting Company Repertory Design and Production Staff, Administrative Staff, and Donor acknowledgements, please visit:  
[www.rubicontheatre.org/winterfest-2025](http://www.rubicontheatre.org/winterfest-2025)  
 or scan the QR code below:



## ABOUT THE ACTING COMPANY

RUBICON THEATRE COMPANY

WINTERFEST 2025

The Acting Company develops actors by touring professional theater coast-to-coast. Founded in 1972 by John Houseman and Margot Harley with the first graduating class of the Drama Division of The Juilliard School, the Company has launched the careers of some 400 actors, including Kevin Kline, Patti LuPone, Keith David, Rainn Wilson, Lorraine Toussaint, Frances Conroy, Harriet Harris, Jeffrey Wright, Hamish Linklater, Jesse L. Martin, and Kelley Curran, while bringing sophisticated theatre to hundreds of communities across the country.

The Acting Company has performed for over 4 million people in 48 States, 10 foreign countries, on and Off-Broadway, and at leading resident theatres including the Guthrie, the Kennedy Center and New York City Center. New works commissioned by The Acting Company include plays by William Finn, Marcus Gardley, Rebecca Gilman, John Guare, Beth Henley, Tony Kushner, Lynn Nottage, Meg Miroshnik, Ntozake Shange, Maria Irene Fornés, Marsha Norman, Samm-Art Williams, and Wendy Wasserstein, among other notable playwrights. The Company's education programs bring award-winning workshop curriculum and in-school residencies to thousands of rural, suburban, and metropolitan schools each year. Among many accolades, The Acting Company received the 2003 Tony honor for Excellence in the Theater and recently won the 2019 Audelco Award for Best Play for its production of Nambi E. Kelley's Native Son directed by Seret Scott.



**LOOKING FOR THE  
PERFECT  
GIFT?**

Give the gift of theatre this holiday season with RUBICON THEATRE gift cards!

**BUY TODAY! SCAN CODE »**

[www.rubicontheatre.org/about-rubicon/gift-cards/](http://www.rubicontheatre.org/about-rubicon/gift-cards/)

**OR CALL: 805.667.2900**



## ABOUT RUBICON THEATRE COMPANY

RUBICON THEATRE COMPANY

WINTERFEST 2025

Rubicon Theatre Company was founded in 1998 as an actors' and directors' company, committed to creating a nurturing environment for artists where exploration and experimentation are encouraged and supported. In the company's intimate 180-seat home in Ventura's Downtown Cultural District, The company has played to more than 550,000 audience members and reached 54,000 students.

True to the Company's name and vision of founders Karyl Lynn Burns and James O'Neil, and Producing Artistic Director J. Scott Lapp the company has developed a reputation for innovation, approaching classics with a fresh eye, and treating new works with a reverence often reserved for classics. Rubicon has been the recipient of a special award for Sustained Excellence from the Los Angeles Drama Critics Circle, and has received two New York Drama Desk Awards. The Company has also received multiple Ovation, Indy, Rep, and NAACP Awards.

Many luminaries have graced the Rubicon stage, including Tony, Obie, Olivier, Ariel and Dora Award winners. These artists work in concert with Rubicon company members, regional and local professionals, and aspiring young artist from Rubicon's education and outreach programs.

Rubicon is governed by a Board of Directors of local business and civic leaders led by Doug Halter, and supported by a Board of Advisors and a volunteer auxiliary.



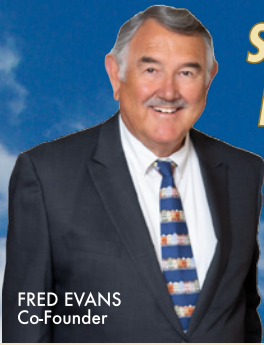
**RUBICON THEATRE COMPANY**

1006 E. Main Street, Ventura, CA 93001  
Box Office: 805.667.2900 Fax: 805.667.2903  
Offices: 805.667.2912  
[guestservices@rubicontheatre.org](mailto:guestservices@rubicontheatre.org)  
[www.RubiconTheatre.org](http://www.RubiconTheatre.org)

*Rubicon Theatre Company is a Non-Profit 501(c)3 Organization.  
Federal Tax ID #: 77-0495901*

 /RubiconTheatre  @RubiconTheatre

 @RubiconTheatre  @RubiconTheatreCompany4415



**SEE FRED SELL...  
HE SELLS WELL!**

**FRED'S 41ST YEAR  
OF SELLING REAL  
ESTATE, TO OVER  
3,000 PAST CLIENTS**  
FredEvans.com

**FRED EVANS**



**RE/MAX**

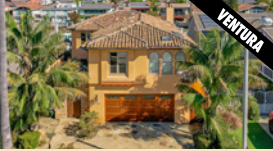
GOLD COAST REALTORS

**805.339.3502** OFFICE  
**805.267.6701** MOBILE



THE FRED EVANS TEAM

**Fred Evans... Sells Ventura County to the World!**



**2790 SAILOR AVENUE** Ventura Keys Waterfront Boat Dock Home! Tuscan-style villa. Spacious two-story, 3-BD, 4-BA home, rebuilt in 2009, w/ approx. 3458 sf. High end & custom features throughout. Waterfront deck, plus approx. 38 ft. boat dock. **LISTED FOR \$3,925,000** www.2790SailorAve.com



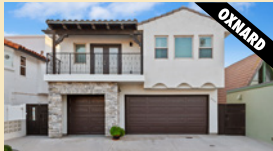
**518 LINCOLN DRIVE** Ventura Prestigious Hobson Heights! This Mediterranean masterpiece w/ breathtaking ocean, island, & mountain views. Approx. 3164 sf w/ 3 BDs & 3.5 BAs, beautifully remodeled since its original 1989 build. **OFFERED AT \$2,695,000** www.518LincolnDrive.com



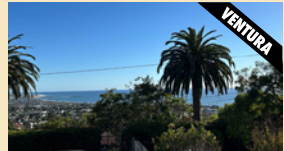
**325 N CATALINA STREET** Ventura Heights Custom Single-Level Mediterranean home w/ Ocean Views. Over half-acre corner lot, gated for privacy. With approximately 3460 sf, 3-BD, 3.5 BAs, plus office, 3-car garage, & putting green. **NEW PRICE \$2,750,000** www.325NcatalinaSt.com



**1184 COLINA VISTA** 20-acre private gated estate in the hills of Ventura. Panoramic views. 4 BR, 3 BAs. Built in 1998 w/ approx. 2774 sf. Pool & spa. Your own family compound, w/ your very own hillside hiking trail! Animal pen & Corrals. Endless possibilities. **OFFERED AT \$2,500,000** www.1184ColinaVista.com



**5306 SANDPIPER WAY** Oxnard, Mandalay Shores. Located on a quiet street with only single-family homes. 10 houses from the beachfront via a private walkway, 4 BD, 4.5 BA w/ approx. 3074 sf. Home built in 2022. Rooftop deck fitted for an outdoor kitchen. **SIGNIFICANT PRICE REDUCTION \$2,295,000** www.5306SandpiperWay.com



**329 MARIPOSA DRIVE** Rare 4BD/3BA coastal home w/ sweeping ocean & island views. Approx. 2235 sq. ft. on a 9,583 sq. ft. lot, this 1950 classic offers charm & opportunity. Features private alley access w/ RV parking & extra storage building. Owned by one family for 55+ years, ready for its next chapter. Surrounded by \$2.5M+ homes—an ideal remodel or investment at **\$1,500,000** www.329MariposaDr.com



**157 KEATS CIRCLE** Lemonwood Senior Park! Beautifully remodeled 3BR/2BA home, 1,541 sq. ft. with A/C, huge stone fireplace, Trex deck, & peaceful cul-de-sac setting by a babbling brook. Includes washer/dryer, fridge, & Tuff Shed! Resort-style amenities: sparkling pool, welcoming clubhouse, BBQ area, & putting green, all in a beautifully maintained park setting. Must see! **LISTED FOR \$599,000** www.157KeatsCirde



**1690 BUENA VISTA STREET** Build Your Dream Home w/ Panoramic Views, Ventura. Privacy at the end of a quiet cul-de-sac—behind a private gate, nestled on approx. 1 acre of land. Once touched by the Thomas Fire, is now the last buildable lot on street. Preliminary architectural renderings available to help jumpstart your vision. **LISTED FOR \$800,000** www.1690BuenaVista.com



**1678 BUENA VISTA STREET** Ventura Ocean & Island View Lot. In the heart of Ventura w/ .75 acres. Quiet, private cul-de-sac of the Buena Vista tract. Avocado trees. Soil & geological completed. Gas & power available to hook up. Close to parks, & downtown Ventura. **LISTED FOR \$499,000** www.fredevents.com

5720 Ralston St. Ventura California  
**Visit www.FredEvans.com for Current Active Listings**

DRE License No. 00893591