



RUBICON THEATRE COMPANY

Eleanor



MAY 13–31, 2026
THE KARYN JACKSON THEATER

Our Fair Lady

BARBARA MEISTER

2025/2026 Season Sponsor



Kimberly Hessler as Eliza Doolittle in
My Fair Lady at Rubicon.
Photo Credit: Jeanne Tanner

MAJOR SPONSORS

RUBICON THEATRE COMPANY

ELEANOR



The season is made possible in part through a grant from the City of San Buenaventura and the County of Ventura. Recent building and equipment upgrades have been made possible through a grant from the California Arts Council and the State of California.

SHOW/SEASON SPONSORS

Stacey & John Birchfield	Jordan Laby & Family
Mary Ann Cohen	The Manitou Fund
Nora McNeely Hurley & Michael Hurley	Barbara Meister
The Jack Oakie & Victoria Horne Oakie Charitable Foundation	Shawn Baker & Jeffrey Naylor
	Valerie & Jeff Snider
	Becky & Steve Snyder

COMMUNITY SPONSOR

Dr. Jeanne Adams

MEDIA PARTNERS

GoCityShopper.com/Local Link App
Jill Webb

CO-SPONSORS



MEDIA SPONSORS



.....

Our 27TH Season is dedicated to longtime Board Member and supporter Stephanie Zierhut.

.....

For information about becoming a sponsor or an underwriter, please contact Rubicon Co-Founder Karyl Lynn Burns at 805.667.2912, ext. 224, or klburns@rubicontheatre.org.

ANNOUNCING OUR 2026/2027 SEASON

 RUBICON THEATRE COMPANY

THE TIES THAT BIND

Human Connections in all their Complexity and Beauty

SUBSCRIBE TO 5 OR 6 SHOWS AND SAVE 15%

RAGTIME
THE MUSICAL

OCT 21 – NOV 15, 2026

Book by Terrence McNally
Directed by J. Scott Lapp

**JOHN
&
JEN**

FEB 10 – 28, 2027

Music by Andrew Lippa
Lyrics & Book by Tom Greenwald

**THE
LEHMAN
TRILGY**

MAY 12 – 30, 2027

Book by Kellen Blair & Joe Kinosian
Lyrics by Kellen Blair | Music by Joe Kinosian

DICKENS'
**a CHRISTMAS
CAROL**
A GHOST STORY

DEC 2 – 24, 2026

By Jefferson Mays, Susan Lyons, & Michael Arden
Starring Tony Award-Winner Jefferson Mays

**MURDER
FOR
TWO**

MAR 24 – APR 11, 2027

By Stefano Massini
Adapted by Ben Power

**COME
FOR
AWAY**

OCT 27 – NOV 21, 2027

Book, Music & Lyrics by
Irene Sankoff & David Hein

*Ragtime is a crossover show. Subscribers to the current show may already have this show as part of their package.

SCAN CODE TO SUBSCRIBE
805.667.2900 | www.rubicontheatre.org



2025/2026 MAINSTAGE SEASON

RUBICON THEATRE COMPANY

ELEANOR

FIFTH MAINSTAGE PRODUCTION | Now on Stage



Eleanor

FIRST MAINSTAGE PRODUCTION

MILLION DOLLAR QUARTET

Book by COLIN ESCOTT & FLOYD MUTRIX
Original Concept & Direction by FLOYD MUTRIX
Directed by CRAIG SCLAVI

OCTOBER 15–NOVEMBER 9, 2025

SECOND MAINSTAGE PRODUCTIONS

A MIDSUMMER NIGHT'S DREAM

Co-Produced with The Acting Company of NY
By WILLIAM SHAKESPEARE
Directed by DEVIN BRAIN

DECEMBER 3–21, 2025

THIRD MAINSTAGE PRODUCTION

THE 39 STEPS

Book by PATRICK BARLOW
Based on the Novel by JOHN BUCHAN
Directed by JENNY SULLIVAN

FEBRUARY 11–MARCH 1, 2026

FOURTH MAINSTAGE PRODUCTION

SOMEBODY TO LOVE

World Premiere
Book By ROBERT STERNIN & PRUDENCE FRASER
Music by THE BANDS WE LISTENED TO ON
VINYL IN OUR BASEMENTS
Directed by SEAN DANIELS

MARCH 25–APRIL 19, 2026

FIFTH MAINSTAGE PRODUCTION

ELEANOR

Written by MARK ST. GERMAIN
Directed by DAVID ELLENSTEIN

MAY 13–31, 2026

SIXTH MAINSTAGE PRODUCTION

RAGTIME

Book by TERRENCE McNALLY
Music by STEPHEN FLAHERTY & LYNN AHRENS
Directed by J. SCOTT LAPP

OCTOBER 21–NOVEMBER 15, 2026

For more information or to
purchase tickets for an upcoming
show, scan the QR code.



COMING SOON TO RUBICON!



THE JACK OAKIE & VICTORIA HORNE OAKIE
2026 SUMMER YOUTH
PROGRAMS



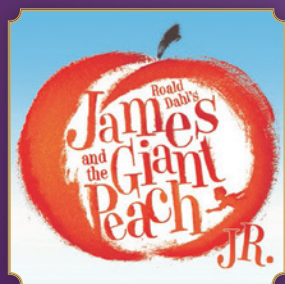
STINKY FEET
THEATRE PROJECT

June 8–June 28 | Ages 5–11
JUNE 27–28



FEARLESS
SHAKESPEARE INTENSIVE

June 15–July 12 | Ages 16–21
JULY 10–12



INTERMEDIATE
MUSICAL THEATRE CAMP

June 29–July 26 | Ages 12–15
JULY 24–26



ADVANCED MUSICAL
THEATRE WORKSHOP

July 13–August 9 | Ages 16–21
AUGUST 7–9

SCAN CODE TO BUY TICKETS
805.667.2900 | www.rubicontheatre.org



RUBICON THEATRE COMPANY

27TH SEASON | 182ND PRODUCTION

J. SCOTT LAPP & KARYL LYNN BURNS
Producing Artistic Directors

presents

Eleanor

Book by
MARK ST. GERMAIN

ELEANOR was originally commissioned by Florida Studio Theatre, Richard Hopkins, Producing Artistic Director. First production of *ELEANOR* at Barrington Stage Company, Pittsfield, MA. Julianne Boyd, Artistic Director and Branden Huldeen, Artistic Producer

Starring
KANDIS CHAPPELL*

Scenic Designer
STEPHEN GIFFORD*

Lighting Designer
MATTHEW NOVOTNY

Sound Designer
AARON RUMLEY

Wig Designer
PETER HERMAN

Technical Director
JIMMY CALLAHAN

Costume Designer
ELISA BENZONI

Projection Designer
IAN SCOT

Production Manager
CHRISTOPHER BEYRIES

Press Consultant
DAVID ELZER, DEMAND PR

Producer/Associate Artistic Director
STEPHANIE COLTRIN

Stage Manager
HANNAH RAYMOND*

Directed by
DAVID ELLENSTEIN†

Presented in Honor of Two Remarkable Women
EILEEN OGLE & JUDITH R. NELSON

Eleanor is presented by arrangement with Theatrical Rights Worldwide (TRW)
1180 Avenue of the Americas, Suite 640, New York, NY 10036
866.378.9758 www.theatricalrights.com

*Member of Actors' Equity Association, the Union of Professional Actors and Stage Managers in the United States
*Designers represented by United Scenic Artists, Local USA 829 of the International Alliance of Theatrical Stage Employees.
†The Director is a member of the Society of Stage Directors and Choreographers Union.

A SOARING MUSICAL EPIC THIS OCTOBER!

RAGTIME

THE MUSICAL



Book by **TERRENCE MCNALLY**

Music by **STEPHEN FLAHERTY**, Lyrics by **LYNN AHRENS**

Based on the Novel "Ragtime" by **E.L. DOCTOROW**

Directed by **J. SCOTT LAPP**

OCT 21 – NOV 15, 2026

This Tony Award-winning musical masterpiece is a portrait of a country — and its people — on the brink of change. Based on E.L. Doctorow's acclaimed novel set at the turn of the twentieth century, three distinctly American tales are woven together — that of a stifled upper-class wife, a determined Jewish immigrant, and a daring young Harlem musician — united by their courage, compassion and belief in the promise of the future. Together, they confront history's timeless contradictions of wealth and poverty, freedom and prejudice, hope and despair. With a soaring, emotionally rich score, *Ragtime* features show-stopping numbers like "Wheels of a Dream," "Make Them Hear You," and "Back to Before." Don't miss this thrilling and poignant theatrical event that resonates as powerfully today as ever — a musical experience that will move, inspire, and stay with you long after the final note!

SCAN CODE TO BUY TICKETS
805.667.2900 | www.rubicontheatre.org



ARTISTIC DIRECTOR'S NOTE

RUBICON THEATRE COMPANY

ELEANOR

Welcome to Rubicon Theatre Company and the fifth Mainstage show of our 2025/2026 Season.

On behalf of our staff and the Board of Directors, we are thrilled to welcome you to the Karyn Jackson Theater and our production of *Eleanor*, written by Mark St. Germain. When I first read *Eleanor*, I was captivated by its poignant and powerful portrayal of one of history's most extraordinary women. With Kandis Chappell bringing Eleanor Roosevelt's remarkable journey to life and David Ellenstein's masterful direction, this production offers a deeply moving exploration of courage, resilience, and transformation. We are thrilled to bring this story to Ventura and share it with you, our cherished audience.



J. SCOTT LAPP

Eleanor by Mark St. Germain is a stunning portrait of Eleanor Roosevelt, one of the most influential women in American history. As the narrator, First Lady Eleanor spins a tale of politicians, society, and the small moments between historical giants, taking us from her childhood through the presidency, and from affairs of the heart to affairs of the state. This tour-de-force solo show of the first lady we think we know, explores quiet, private memories that made Eleanor who she was: an advocate for the underdogs, a paragon of fairness, and, above all, the heart of the country. As she weaves the tale of her public and private lives, we see her at times both strong and vulnerable. The impact of the passionate and unforgettable woman at the heart of her husband's presidency cannot be understated.

Eleanor was originally commissioned by the Florida Studio Theatre as part of the Suffrage Centennial (2020). St. Germain had done a host of research on the Roosevelts for a different project and decided to see if there was anything that would meet the present moment. After readings at Florida Studio Theatre and then Barrington Stage Company in Massachusetts, *Eleanor* went on to premiere at Barrington Stage and has been seen on stages across the country.

Your presence today is the very foundation for Rubicon Theatre Company. Without the support of our patrons and donors, we could not realize our commitment to produce world-class professional theatre, as well as continue our robust education and community engagement programs. Thank you for joining us today to keep live theater thriving here in Ventura. We can't wait for you to experience the rest of our 2026 offerings.

With gratitude,

J. SCOTT LAPP

Interim Artistic Director



WHERE EVERY VOICE MATTERS

Delivering Real People to Local Business



WE OUTPERFORM THE INDUSTRY
WE DELIVER ACTUAL PEOPLE

WE ARE LOCAL MARKETING EXPERTS
WE DO IT ALL - BIG OR SMALL



today's hits • yesterday's favorites



Find us on Facebook & Instagram

A NOTE FROM DIRECTOR DAVID ELLENSTEIN

RUBICON THEATRE COMPANY

ELEANOR

"This above all: to thine own self be true."
(Ham. 1.3.84)

It isn't easy to be our best selves. Life is filled with bumps and bruises. Mark St. Germain's play *Eleanor* doesn't skirt these issues in Eleanor Roosevelt's life; but somehow, through it all, her better self seemed to prevail. The world is better for it.

Working in the theatre is always an education. The worlds that we explore and bring to light are often out of our sphere of knowledge or experience. That's why it never gets old and always presents new ideas and challenges.

I always knew who Eleanor Roosevelt was. But she died when I was a child. My parents mourned her loss. I didn't really understand why.

What a pleasure it has been to work on this play about this amazing woman who blazed a trail for so many who followed. To learn how this first lady redefined that role and used her influence to work tirelessly for the betterment of all people has been a life-affirming experience for me. Though a staunch Democrat politically, she was really a staunch Humanist who cared for all, and held "being of service" as the highest of ideals.

One doesn't approach working on a one-person play, especially about someone as iconic as Eleanor, without the right actor. Enter, the splendid Kandis Chappell. Watching an accomplished and experienced actor like Kandis work to bring Ms. Roosevelt to life has been a joy and an honor. As always, a cracker-jack team of designers at Rubicon has enhanced this story with their artistic acumen. I am grateful to all for their creative imagination and skill.

Now I understand my parents' mourning, and relish this opportunity to celebrate on the stage an amazing life well-lived.

Welcome to *Eleanor*.

DAVID ELLENSTEIN
Director of *Eleanor*



DAVID ELLENSTEIN

VENTURA COUNTY'S BEST ADVERTISING SOURCE



**In Print
& Online
FREE Every
Week!**



Scan here for your
FREE Digital Subscription!

VCReporter

The VC Reporter has served as Ventura County's leading lifestyle reference, delivering trusted, community-focused news and information to thousands of engaged readers weekly.

**For Information, call: 805-648-2244
or visit us at vcreporter.com**

PRODUCTION DETAILS

RUBICON THEATRE COMPANY

ELEANOR

TIME & PLACE

Rock Creek Cemetery, Washington, D.C.
Past & Present: Spring, Summer, Fall, and Winter

CAST

Eleanor Roosevelt.....KANDIS CHAPPELL*



KANDIS CHAPPELL*

Production Stage Manager
HANNAH RAYMOND*

*Members of Actors Equity Association,
the union of professional actors and stage managers in the United States.

Please turn off all electronic devices such as cellular phones and watch alarms.
The use of any recording devices, either audio or video; and the taking of photographs,
with or without flash, are strictly prohibited.

Latecomers will be seated at the discretion of the House Manager.
Wheelchair seating is available in a variety of theatre locations. When ordering tickets, please
indicate any special needs. Please contact an usher if you require assistance.

SANTA BARBARA **INDEPENDENT**

**PROUDLY SUPPORTS THE
SANTA BARBARA ARTS COMMUNITY**

.....
**NEWS, ARTS, AND THE MOST COMPREHENSIVE
EVENT LISTINGS IN THE COUNTY**

**IN PRINT EVERY
THURSDAY + ONLINE DAILY
AT INDEPENDENT.COM**



@sbindependent on all platforms

Santa Barbara
Independent
INDEPENDENT.COM

PRODUCTION CREDITS

RUBICON THEATRE COMPANY

ELEANOR

FEATURED IMAGES

Photos in this production provided courtesy of the following:

Heritage Image Partnership Ltd. / Alamy Stock Photo

John Gollop / Alamy Stock Photo

Pictorial Press Ltd. / Alamy Stock Photo

Associated Press

Photo # [18170805484192. 2DB9EB5621AB2DE9A30F6685BOADFED8]

Stephenson/Topical Press Agency/Hulton Archive/Getty Images

Photo of three Jewish refugee children from Nazi Germany, waiting to be collected by their relatives or sponsors at Liverpool Street Station, London, after arriving by special train on the Kindertransport programme, 5th July 1939. They are (left to right) sisters Ruth and Inge Adamecz from Breslau (now Wrocław, Poland) and Hanna Cohn (later Hanna Singer) from Halle an der Saale.

FEATURED MUSIC

“This Is The Army Mister Jones”

Music and Lyrics by **Irving Berlin**

This selection is used by special arrangement with Rodgers & Hammerstein Holdings LLC on behalf of the Trustees of the God Bless America Fund, www.concord.com.
All Rights Reserved.

“Happy Days Are Here Again”

Music and Lyrics by **Milton Ager & Jack Yellen**

This selection is used by special arrangement with EMI Robins Catalogue Inc.
All Rights Reserved.

“Always”

Music and Lyrics by **Irving Berlin**

This selection is used by special arrangement with Universal Music Corp.
on behalf of Irving Berlin Music Company.
All Rights Reserved.

.....
Original logo design by Henzel Design www.henzeldesign.com

ON STAGE JUNE 3-21

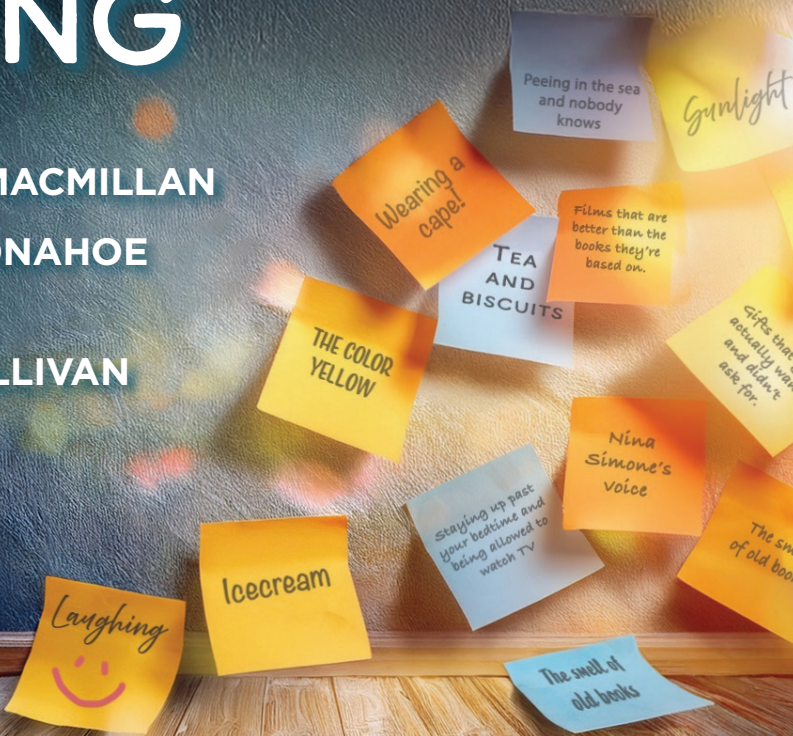
EVERY BRILLIANT THING

BY
DUNCAN MACMILLAN
WITH
JONNY DONAHOE

DIRECTED BY
JENNY SULLIVAN



STARRING **Nicholas Mongiardo-Cooper!**



ENSEMBLE THEATRE COMPANY
AT THE NEW VIC

SANTA BARBARA'S PROFESSIONAL THEATER COMPANY

VISIONARY PRODUCERS
Dana White
Geof and Laura Wyatt
EXECUTIVE PRODUCERS
Zegar Family Foundation
SUPPORTING PRODUCERS
Deborah and Peter Bertling
Anne and David Gersh
Deb and Ken Pontifex
Helene Segal and George Konstantinow
Sheila M. Stone

50 Years of Sports, Health Fitness and Friends!



HOT TUB & SAUNA

GROUP CLASSES



**Come in for a tour and
experience what it means
to Live Life Well!**



TENNIS PICKLEBALL SWIM SHUFFLEBOARD FITNESS

GAME ROOM RENTAL VENUE WELLNESS SERVICES CAFE

Located by the beach!

KANDIS CHAPPELL (*Eleanor Roosevelt*) is delighted to be making her Rubicon Theatre Company debut. She is an Associate Artist of the Old Globe in San Diego, where she has appeared in more than 30 productions; and has worked extensively at South Coast Rep in Costa Mesa, where she has performed in more than 20 shows and won 4 Los Angeles Drama Critic Circle awards. She has appeared on Broadway, and at many wonderful theaters across the country.

MARK ST. GERMAIN (*Playwright*) has written the plays *Freud's Last Session* (Off Broadway Alliance Award), *Camping with Henry and Tom* (Outer Critics Circle Award and Lucille Lortel Award), *Forgiving Typhoid Mary*, (Time Magazine's "Year's Ten Best"), and *Becoming Dr. Ruth*, the story of Dr. Ruth Westheimer. Other plays include *Eleanor*, *Best of Enemies*, *Relativity*, and *Out of Gas on Lover's Leap*. His latest play *The Happiest Man On Earth, The Beautiful Life of an Auschwitz Survivor* premiered in the summer of 2023 at the Barrington Stage Company. Mark co-wrote the screenplay for Carroll Ballard's Warner Brothers film "Duma." He directed and co-produced the documentary "My Dog, An Unconditional Love Story," featuring Richard Gere, Glenn Close, and Billy Collins, among others. His film adaptation of "Freud's Last Session" was released by Sony Entertainment in 2024. He has written the award-winning children's book "Three Cups," "Walking Evil," a humorous memoir, and "The Mirror Man," a thriller. Mark is a member

of the Dramatists Guild, the Writer's Guild East, and an Associate Artist at the Barrington Stage Company. The Barrington Stage Company named their second stage "The St. Germain Stage."

DAVID ELLENSTEIN (*Director*) is happy to be making his Rubicon debut. North Coast Repertory Theatre's Artistic Director since 2003 with more than 180 productions there, David is also the former Artistic Director of Laguna Playhouse, Arizona Jewish Theatre and Los Angeles Repertory Company. David was born into a theatrical family, spending his entire life working in the theatre as an actor and director. He has worked at theatres from San Diego to Maine, Alaska to Miami, and most places in between, including Coconut Grove Playhouse, Paper Mill, Arizona Theatre Company, Portland Stage, Portland Rep, Meadow Brook, 59E59; and Alabama, Great Lakes, California, Nevada and Kingmen Shakespeare Festivals. David has taught at numerous universities and appeared in three dozen films or television episodes.

STEPHEN GIFFORD (*Scenic Designer*) is grateful to be a part of *Eleanor* again with David and Kandis. Stephen's designs have been seen on stages across the country and internationally, including The Grand Ole Opry, The Chicago Theatre, Madison Square Garden, The El Sett & Abdel Halim Theaters (Riyadh, Saudi Arabia), Sacramento Music Circus, The Walnut Street Theatre, 5th Avenue Theatre, Phoenix Theatre Company, Juneau Lyric Opera, La Mirada Theatre for

the Performing Arts/McCoy Rigby, and many more. He has garnered many awards and nominations for his work. He was awarded The Bob Z Award for Career Achievement in Set Design by the Los Angeles Drama Critic Circle and was awarded Broadwayworld.com's Scenic Design of the Decade in Los Angeles for Celebration Theatre's production of *Cabaret*. In addition to scenic design for theatre, Stephen has also designed for live immersive events, themed interiors, nightclubs, and cabarets. He holds an M.F.A. from NYU's Tisch School of The Arts and is a proud member of United Scenic Artists, Local 829. For more about Stephen, please visit [IG @swgifford1](https://www.instagram.com/swgifford1) or stephengifforddesign.com

MATTHEW NOVOTNY (*Lighting Designer*) is happy to be making his Rubicon debut with *Eleanor!* Matthew is the Lighting Designer in Residence at North Coast Rep in San Diego, where he has designed over 120 shows. Matthew has also designed over a dozen shows for the Laguna Playhouse. Down in San Diego, Matthew is all around town working with students on what it is to be a Lighting Designer. He designs around 35 shows a year, while teaching at places like Cal State San Marcos, Palomar College, San Diego State University, Point Loma Nazarene University, Chula Vista School for the Creative and Performing Arts, and Pacific Ridge School. Matthew Also works with students at San Diego Junior Theatre, as well as A Step

Beyond Dance Company. Matthew holds a B.A. in Technical Theatre from San Diego State, and a Master's in Lighting Design from Boston University. Matthew is married to his beautiful wife Amanda, with whom he has 5 amazing children between the ages of 7-14 (Ragan, Harper, Heston, Maddex, and Harrison).

AARON RUMLEY (*Sound Designer*) is excited to be working with Rubicon Theatre. He is also an AEA stage manager, lighting, and sound designer. He is thankful to the Rubicon team, cast, designers, and crew for all their hard work.

ELISA BENZONI (*Costume Designer*) has worked on over 100 productions across Southern California with theatres including The Old Globe, La Jolla Playhouse, Geffen Playhouse, South Coast Repertory, Laguna Playhouse, North Coast Repertory, San Diego Repertory, Diversionary Theatre, and New Village Arts. Being Italian born, Elisa has also had the opportunity to work and develop her craft in Europe. She is currently Professor of Costume Design at the University of San Diego.

PETER HERMAN (*Wig Designer*) is a well-known designer in the Southern California area. He has designed wigs and makeup for over 500 productions. His work has been seen in many prominent theaters, at opera houses and theme parks, and on film and television screens. Peter currently teaches wigs and makeup at San Diego State University.

IAN SCOT (*Projection Designer*) is a sound designer, composer, and projection designer based in NYC. His work spans theatre, opera, dance, and installation, with credits including projects with Playwrights Horizons, Minetta Lane, Roundabout Underground, Signature Theatre, Alliance Theatre, Orpheum Theatre of New Orleans, A.C.T of Connecticut, Tuacahn Amphitheater, A.R.T., Heartbeat Opera, Yale Rep, and Laguna Playhouse, among others. Ian is a member of USA829. IG @ianscxt. ianscot.com

HANNAH RAYMOND* (*Stage Manager*) is a Texas native who enjoys game nights with friends. She is an avid reader and baker; her current obsession has been sourdough bread. She believes there is power in storytelling and lives for the moments after shows when the audience is alive with conversation. Hannah previously stage managed *The 39 Steps*, *Bonnie & Clyde*, *Crazy Mama*, and *Constellations* at Rubicon, *Cabaret* and *Hair* at Altadena Music Theatre; *The Lifespan of a Fact* and *White Rabbit Red Rabbit* at Fountain Theater; and *Jersey Boys* with Plan B Entertainment. Shoutout to her husband Braden for always supporting her in everything she does. Romans 12:21 IG @bananaslaymond



805.641.1076
passionflowersventura.com
920 East Main Street, Ventura, CA 93001

J. SCOTT LAPP* (*Interim Artistic Director/Artistic Associate*) is an award-winning director, a proud member of the SDC, and the Interim Artistic Director and Artistic Associate at Rubicon Theatre Company. He has worked across the United States, as well as internationally in London, Denmark, Japan, and Canada. He is an alumnus of the Directors Lab West and a 2011 SDC Emerging Artist. He is the recipient of the 2022 Craig Noel Award for Outstanding Direction and Outstanding New Production for *Witnesses*. Recent directorial projects include the 2025 revival of *Murder for Two* that played Tokyo and a number of other Japanese cities and the U.S. premiere of a reimaged production of *Bonnie & Clyde* at Rubicon. He also served as Associate Director on the World Premiere West End production of Dreamwork's *The Prince of Egypt* that can now be viewed on BroadwayHD and various streaming services. Associate/Assistant Directing credits include Broadway: *Bonnie & Clyde*; International: *The Prince of Egypt* (West End, Fredericia Teater); Off-Broadway: *Murder for Two* (New World Stages), *Freedom Riders* (NYMF); National Tours: *Murder for Two*, *Xanadu*. Regional: *Disney's The Hunchback of Notre Dame* (Paper Mill Playhouse, La Jolla Playhouse); *Rain*, *Into The Woods*, *Good People*, *A Room With a View* (Old Globe); *Secondhand Lions* (5th Ave). Selected directing credits include International: *Murder for Two* (Japan, Calgary), Regional: *Bonnie & Clyde*, *the Musical* (U.S.

Premiere), *The Curious Incident of the Dog in the Night-Time* (San Diego Premiere), *Bottle Shock! The Musical* (World Premiere), *Witnesses* (World Premiere), *Once*, *Joseph and The Amazing Technicolor Dreamcoat in Concert* (CCAETheatricals), and *Disney's Mary Poppins*, *Freaky Friday* (Moonlight Amphitheater). Jeremy has worked for major regional theatres including 5th Avenue, Arizona Theatre Company, Asolo Repertory Theatre, Bucks County Playhouse, Denver Center Theatre Company, The Cape Playhouse, La Jolla Playhouse, NC Theatre, the Old Globe, Paper Mill Playhouse, Pasadena Playhouse, Pittsburgh CLO, Portland Center Stage, Saint Michael's Playhouse, TheatreWorks Silicon Valley, and others. He is a recipient of Craig Noel, StageRaw, PAMTA, Inland Theatre League, Patté, National Youth Theatre, Billy, and Director's Choice awards. Much love to Holly for being his sounding board, rock, and lifelong partner. www.jscottlapp.com IG: @jscottlapp

KARYL LYNN BURNS (*Producing Artistic Director*) founded Rubicon with husband James O'Neil in 1998 and has overseen more than 180 productions for the company, including the World Premieres of *23.5 Hours/Conviction* by Carey Crim (a co-production with Bay Street Theater and the Royal Manitoba Theatre Centre); *Daddy Long Legs* (which has traveled to 15 U.S. cities and 4 countries and is licensed by MTI); *The Best is Yet to Come: The*

UNIVERSITY PREPARATION
CHARTER SCHOOL



JOIN THE UPCS SCHOOL FAMILY! APPLY FOR THE 26-27 SCHOOL YEAR TK-8

ENROLLMENT IS BASED ON AVAILABLE SPACE
A PRIVATE SCHOOL EXPERIENCE IN A PUBLIC
SCHOOL SETTING

UNIVERSITY PREPARATION CHARTER SCHOOL AT CSU CHANNEL ISLANDS



PROGRAM HIGHLIGHTS:

- LANGUAGE PROGRAMS
- ARTS AND ENRICHMENT CLASSES
- RICH TECHNOLOGY RESOURCES
- PHYSICAL EDUCATION PROGRAM
- MULTICULTURAL/MULTILINGUAL
- FULL DAY TK AND KINDERGARTEN

**CELEBRATING
24 YEARS
OF EXCELLENCE
IN DUAL
IMMERSION
EDUCATION**

FOR MORE INFORMATION PLEASE VISIT OUR WEBSITE AT
[HTTPS://UNIVERSITYCHARTERSCHOOLS.CSUCI.EDU](https://universitycharterschools.csuci.edu)



805-482-4608
1099 BEDFORD DRIVE
CAMARILLO, CA

CONTACT
LDONOFRIO@PLEASANTVALLEYSCHOOLSDISTRICTS.DISTRICTS.CA
[HTTPS://UNIVERSITYCHARTERSCHOOLS.CSUCI.EDU](https://universitycharterschools.csuci.edu)

RUBICON ARTISTIC AND PRODUCTION STAFF

RUBICON THEATRE COMPANY

ELEANOR

Music of Cy Coleman (NY Drama Desk Award); *Lonesome Traveler* (Drama Desk and Outer Critics Circle nominations); *My Antonia* adapted and directed by Scott Schwartz with music by Steven Schwartz; *It's Only Life* by John Bucchino, directed by Daisy Prince; and *Hello! My Baby* by Cheri Steinkellner. Karyl Lynn partnered with Daryl Roth to produce the Off-Broadway production of *Wiesenthal* by Tom Dugan, directed by Jenny Sullivan (Drama Desk and Outer Critics Circle nominations). For over a decade prior to starting Rubicon, Karyl Lynn was CEO of State of the Arts, an arts marketing and management firm. Clients included Ventura Music Festival, New West Symphony, Ensemble Theatre Company, PCPA Theaterfest, Theatre League, Broadway Producer Normand Kurtz, and Tony Award-winning playwright Dale Wasserman. Karyl Lynn worked with students from Oak Meadow School who received the United Nations "Global 500" Award for their work on environmental issues. For The Dream Foundation, she produced a PSA directed by Mimi Leder and starring Jeff Bridges. As an event planner, Karyl Lynn and her staff coordinated the 10TH Annual "Cool Comedy, Hot Cuisine" with Robin Williams, Howie Mandel, and Bob Saget, emceed by Bob Costas; a concert for Scleroderma Research with singer Sheryl Crow at the Santa Barbara Bowl; and several charity film premieres. For Capps for Congress, she managed a 400-person luncheon with Hillary Clinton as keynote

speaker. Karyl Lynn is also an award-winning actor and sound designer, and recently received a 2025 Special Recognition Award for Distinguished Achievement from the L.A. Drama Critics Circle.

JAMES O'NEIL (*Rubicon Co-Founder and Artistic Director, Emeritus*) is the Co-Writer/Director of *A Cowboy Lullaby*, which completed a successful run at Rubicon in the fall of 2024. He is also Writer/Director of *Lonesome Traveler: A Journey Down the Rivers and Streams of American Folk* (NY Drama Desk and Outer Critics Circle nominations), which premiered at Rubicon as a co-production with Laguna Playhouse and then transferred to 59E59 Off-Broadway. Jim's other Rubicon directing credits include *I Dig Rock and Roll Music* (Writer/Director), *King Lear*, *Man of La Mancha*, *Fiddler on the Roof* (Indy Award), *Jesus Christ Superstar*, *A Delicate Balance*, *The Diary of Anne Frank*, *The Night of the Iguana*, *A Streetcar Named Desire* (Indy Award), *Driving Miss Daisy* (NAACP Award - Best Direction of a Play), *All My Sons* (L.A. Ovation Award - Best Production of a Play), *Sylvia*, and *Gem of the Ocean*. Under Jim's artistic leadership, Rubicon accepted the NY Drama Desk Award for *The Best is Yet to Come: The Music of Cy Coleman*, conceived and directed by David Zippel. Other directing credits include *The Lion in Winter*, *The Petrified Forest*, *Inherit the Wind*, and regional premieres of *A*

RUBICON ARTISTIC AND PRODUCTION STAFF

RUBICON THEATRE COMPANY

ELEANOR

Coupla' White Chicks Sitting Around Talking, and *The Mystery of Edwin Drood*. While on staff at Landmark Entertainment Group, Jim directed a multi-million-dollar animatronics/special effects show in Japan, supervising all aspects of production and creative direction for themed attractions in Sanrio's Harmonyland. As an actor, Jim's Rubicon credits include the title role in *Clarence Darrow*, Dr. Prospero in *Return to the Forbidden Planet*, Claudius in *Hamlet*, Stage Manager in *Our Town*, Michael in *Dancing at Lughnasa*, and multiple roles in *The Turn of the Screw*. He appeared for two years as Pontius Pilate in the National Tour of *Jesus Christ Superstar* starring Ted Neeley, Carl Anderson, and Irene Cara. Regional credits include John Adams in *1776*, The Duke/Dr. Carrasco in *Man of La Mancha*, and Adam in the first workshop of Dale Wasserman's *Western Star*. Jim may be heard singing the title role in *Quasimodo: Prince of Fools* and as Tsar Nicholas in *Rasputin* on concept albums by Michael Rapp.

STEPHANIE A. COLTRIN (Associate Artistic Director/Producer) is an award-winning theatre director and producer whose work spans musicals, Shakespeare, contemporary plays, and world premieres. At Rubicon, her directing credits include *Almost, Maine*, *Buyer and Cellar*, *Taking Sides*, *Sylvia*, *Moonlight and Magnolias*, and the Ovation-recommended production of *The Last Five Years*. As Associate Artistic Director/Producer,

Stephanie line produces all mainstage performances and special events at Rubicon. Stephanie is the Co-Artistic Director of Shakespeare by the Sea and Little Fish Theatre, leading two distinct but interconnected professional theatre programs serving communities throughout Southern California. Shakespeare by the Sea presents a free summer Shakespeare repertory that tours to more than 20 locations, while Little Fish Theatre produces a year-round season of classic and contemporary work. For Shakespeare by the Sea, Stephanie has adapted and directed *Hamlet* (twice) *Richard III*, *Richard II* (virtual), *Twelfth Night* (virtual), *Titus Andronicus*, *Henry V*, *Henry VI, Part 1* (Co-Director), *The Winter's Tale*, *Macbeth*, *Othello*, *The Tempest*, *Julius Caesar* (twice), *King Lear*, *Romeo and Juliet* (twice), *King John*, and others. For her work with the company, she has been featured on PBS and interviewed by the Folger Shakespeare Library. At Little Fish Theatre, her directing credits include *The Lonesome West*, *Bloody Poetry*, *Oswald: The Actual Interrogation*, *Bach at Leipzig*, *The Love List*, *Panache*, *Stones in His Pockets*, *The Weir*, *Table Manners*, *And the Stones Will Cry Out*, *Looking*, and *Spit Like a Big Girl*. Her additional directing credits include *The Santaland Diaries*, *A Midsummer Night's Dream*, *The Taming of the Shrew*, *Godspell*, *Barefoot in the Park*, *Who's Afraid of Virginia Woolf?*, *Private Lives*, *Steel Magnolias*, *Blithe Spirit*, *Art*, *The Green Room* (World Premiere), *Come*

RUBICON ARTISTIC AND PRODUCTION STAFF

RUBICON THEATRE COMPANY

ELEANOR

Back to the Five & Dime, *Quilters*, *Wait Until Dark*, *The Eight: Reindeer Monologues*, *Fully Committed*, and *Manson's Girls*. Stephanie previously served as Artistic Director of CLO of South Bay Cities and the Hermosa Beach Playhouse, where she helmed full seasons and directed productions including *Miss Saigon* (Ovation Award for Best Musical, Directing nomination), *Seussical the Musical* (BroadwayWorld Award for Best Director), *Jesus Christ Superstar* (StageSceneLA Award), *Oklahoma!*, *She Loves Me*, *Bark!*, and *The 1940's Radio Hour*. She has taught musical theatre master classes, served as an Ovation Awards voter, judged LA's Next Great Stage Star, and taught graduate-level seminars. Her career also includes extensive stage management and production work, as well as film production coordination.

DAVID ELZER (Publicist), in addition to representing Rubicon, works with Actors Co-op, Celebration Theatre, Circle X Theatre Company, The Colony Theatre Company, 5-Star Theatricals, Independent Shakespeare Co., Laguna Playhouse, La Mirada Theatre for the Performing Arts, NoHo Arts Center Ensemble, Ojai Playwrights Conference, Open Fist Theatre Company, Road Theatre Company, Theatre of NOTE, Theatre Tribe, and VS. Theatre Company. As a producer, he has twice won the L.A. Drama Critics Circle Award and was also honored to receive the Circle's prestigious Joel Hirschhorn Award for Outstanding Achievement

in Musical Theatre. David has been nominated for six Ovation Awards (winning two), and has also won Drama Desk, *L.A. Weekly*, and Garland Awards for his producing and writing efforts. Productions include the Celebration Theatre productions of *Justin Love*, which he conceived, commissioned, and co-wrote; and *The Color Purple*. David also produced the World Premiere musical *Having It All* at the NoHo Arts Center and Laguna Playhouse; the World Premiere play *Girls Talk* starring Brooke Shields; the record breaking, 19-month run of *The Marvelous Wonderettes* and *Winter Wonderettes* at the El Portal Forum Theatre; and the smash-hit *Life Could Be a Dream*, which ran for a year at the Hudson Mainstage in Hollywood. www.DemandPR.com

CHRISTOPHER BEYRIES (Production Manager) is delighted to join the Rubicon team. He previously designed sets for Rubicon productions of *Taking Sides*, *Moonlight and Magnolias*, and *A Tuna Christmas*. Other favorite design credits include *And the Stones Will Cry Out*, *Henry IV, Part 1*, *Taking Sides*, *Chapter Two*, *Time Stands Still*, *Hedda Gabler*, *Pick of the Vine*, *The Weir*, *Barefoot in the Park*, *The Light in the Piazza*, *The 1940's Radio Hour*, *Beehive*, *A Midsummer Night's Dream*, *Spit Like a Big Girl*, *Wait Until Dark*, *Who's Afraid of Virginia Woolf?*, *Jesus Christ Superstar*, *The Green Room*, *Bye Bye Birdie*, *The Nerd*, *Steel Magnolias*, *Twice Upon a Time*,



SHOP AT
THE WHARF
 VENTURA, CALIFORNIA

WE HAVE SOMETHING FOR EVERYONE

Over 20,000 Pairs of Mens & Ladies Jeans In-Stock at Everyday Low Prices That Beat Department Store Prices!

- CASUAL WEAR
- WORK WEAR
- FOOTWEAR & BOOTS
- GIFTS • SADDLERY
- FEED • PET SUPPLIES

980 FRONT STREET | VENTURA, CA 93001 | (805) 648-5037 | www.thewharfonline.com

RUBICON ARTISTIC AND PRODUCTION STAFF

RUBICON THEATRE COMPANY

ELEANOR

Art, and *Godspell*. He previously served as Technical Director and Resident Scenic Designer for Civic Light Opera of South Bay Cities and Hermosa Beach Playhouse. His work has been seen coast to coast (and beyond), including NBC, Princess Cruises, Actors Theatre of Louisville, and Opera San Jose. Chris created the "Behind-the-Scenes Workshop" at the Santa Monica Playhouse, where he was also the technical director. Chris' work has taken him to Mexico, Europe, and Japan.

JIMMY CALLAHAN (*Technical Director*), had his first taste of theatre while assisting the previous technical director and working backstage for *The Realistic Joneses* at Rubicon. He has since continued with productions including *Dark of the Moon*, *The World Goes Round*, and "A" Train. Jimmy was also part of the Rubicon production of *Eisenhower: This Piece of Ground*, traveling with the show to Santa Barbara and Olney Theatre Center in Maryland. He has now taken on the role of Technical Director here at Rubicon Theatre.



LAW OFFICES OF ROBERT M. BERGER

For over 30 years, LORMB has been providing quality legal representation:

- Estate Planning
- Probate and Trust Administration
- Non-Profit Corporations
- Business Law

Offices:

260 Maple Court,
 Suite 119, Ventura, CA
 805-658-0998

16830 Ventura Blvd.,
 Suite 500, Encino, CA
 818-385-1770

Contact Robert Today:
rberger@rmbergerlaw.com | www.rmbergerlaw.com

A Special Thanks to Our Rubicon Jewel Club Sponsor



CARPINTERIA WINE COMPANY

FINE WINES AT DISCOUNT PRICES
 805.684.7440 | www.CARPINTERIAWINECO.COM
 4193 CARPINTERIA AVE #1, CARPINTERIA, CA 93013

GO BEHIND-THE-SCENES

RUBICON
Jewel Club



Rubicon’s Jewel Club is a three-year sustaining membership program offering various behind-the-scenes benefits.

Membership is a great way to make new friends with similar interests, meet many of the artists involved in directing and designing Rubicon productions, and gain insight into the creative process. Members attend directors’ previews in private homes and receive other special perks.



For more information, please contact:
Kimiko Tokita, Development Manager
ktokita@rubicontheatre.org
or at 805.667.2912, ext. 226.

The listing below reflects memberships received from April 2, 2025 to April 1, 2026. Donations made after April 1, 2026, will be included in the next program. To become a new Jewel Club member, or to notify us regarding any errors or omissions, please contact Kimiko Tokita, Development Manager, at 805.667.2912, ext. 226, or e-mail her at ktokita@rubicontheatre.org.

GOLD COIN

(\$10,000+)

- Lori & Dr. Richard Reisman
- Susan Van Abel & Eric Oltmann
- Leah Palmer-Zondlo & James Zondlo

DIAMOND

(\$6,000+)

- Nancy & Richard Francis
- Rozanne & Randy Haege

EMERALD

(\$3,000+)

- Jeannette & Dennis Longwill
- Laurie & Steven Weiss

RUBY

(\$1,250+)

- | | |
|-----------------------------|-------------------------------|
| Jeanne Adams | Herb Hemming |
| Donna Burger | Tom Hinkle |
| Patricia Butler | Jon Ives |
| Nan Drake | Julie & Don Morath |
| Cherie & Michael Eulau | Nancy Rasmussen & Bill Wayson |
| Sue & Steve Eulau | Paula & Scott Rushing |
| Lynda & Fred Evans | Jody Shapiro |
| Judi & Manny Garcia | Rebecca & Jeffrey Smith |
| Lynn & Al Geller | Valerie & Jeff Snider |
| Barbara Gural | Diana Troik |
| Randy Encinas & Doug Halter | S. Blake & Charles Wade |
| Jim Harrison | Stephanie Zierhut |
| Mary Harrison | |

Susan Van Abel, Chair

2025/2026 BOARD OF DIRECTORS

RUBICON THEATRE COMPANY

ELEANOR

OFFICERS

DOUG HALTER

President

Owner, Halter-Encinas Enterprises
Deputy Mayor, City of Ventura

JEANNE P. ADAMS, PH.D.

Vice President

Professor/Educational Consultant

ROSA LEE MEASURES

Honorary Chair

Real Estate and Investment Manager
Former Deputy Mayor, City of Ventura

STEPHANIE ZIERHUT

Secretary/Treasurer

Retired Educator

MEMBERS-AT-LARGE

MOUSTAPHA ABOUSAMRA, MD

Doctor, Retired Neurosurgeon
Ventura County Neurosurgical Associates

CLAIRE BOWMAN

Retired Educator/Owner
Ripple Property Management

ABRA PILAR FLORES

Retired Educator/Costume Designer

JEFFREY S. GROVE, MD

D.O., FACOFP dist.
Suncoast Family Medical Associates

MICHAEL JACKOWITZ

Producer
WitzEnd Productions

MATT D. MARQUIS

CEO
Pacifica Hotels

TOM PARKER

Assistant Special Agent in Charge (Ret.)
Los Angeles FBI Field Bureau/
Owner, Emerald Isle Security

RICHARD A. REISMAN, MD, FACOG

Board Certified Obstetrician & Gynecologist
Community Memorial Hospital

SCOTT RUSHING

Owner
Rushing Real Estate & Investment Co
& Tri County Ag Pros

DAVID SIMPSON

Former Owner/President
The Scenic Express

DOUGLAS G. (GIL) WEBBER

Attorney
Law Office of Douglas G. Webber

EX OFFICIO

ROBERT M. BERGER

Legal Advisor

SHELLY BRAUN

Community Volunteer
Board of Advisors Liaison

SUSAN VAN ABEL

Community Volunteer
Jewel Club Liaison

2025/2026 BOARD OF ADVISORS

RUBICON THEATRE COMPANY

ELEANOR

SHELLY BRAUN

Chair
Community Volunteer

BRUCE BARRIOS

Professional Mobile DJ
Bruce Barrios Productions

KIM BELL

Vice President, Client Connections
Corporate Inclusion Strategies
The ActOne Group

MARCELL BRICKEY

English Teacher
Oxnard High School

SUSAN CLARK

Actor/Producer

KEVIN M. CLERICI

Executive Director
Downtown Ventura Partners

HARRIET CLUNE

Retired Real Estate Broker/Manager
Coldwell Banker

KENNETH S. COLLIN

Retired Businessman

FREDDIE CONTARINO

Community Volunteer

CHERIE EULAU

Retired Educator

REBECCA FOX

Retired Educator

NANCY BUTLER FRANCIS

Retired Land Use Planner
County of Ventura

RANDY HAEGE

Retired School Administrator
Los Angeles Unified School District

MYRON HARRISON

CEO
Harrison Industries/E.J. Harrison and Sons

NANCY ISRAEL

Community Volunteer

KELLY-MARIE JONES

Regional Sales Manager
Point Broadcasting

CATHERINE LEE

Senior Living Director

TRACY LONG, PH.D.

Director
Ventura Botanical Gardens

MATTY PARK

Retired Data Analyst
Bank of America

RICH STEWART

Retired Mortgage Lender
Washington Mutual Bank

SACHEEN SWAN

Civil Law Clerk
Ventura County Counsel

SUSAN VAN ABEL

Community Volunteer

DONORS

RUBICON THEATRE COMPANY

ELEANOR

The listing below reflects donations made between April 2, 2025 to April 1, 2026. Donations made after April 1, 2026, will be included in the next program. To make a donation, or to let us know of any errors or omissions, please contact Perla Ponti, Chief of Staff, at 805.667.2912, ext. 225, or e-mail her at pponti@rubicontheatre.org.

\$50,000+

Anonymous [†] (1)	Dr. Jeffrey Grove
Shawn Baker & Jeff Naylor	Nora McNeely Hurley & Michael Hurley
Ben & Julia Campbell Namba Fund to Benefit Rubicon Theatre*	Lori & Dr. Richard Reisman
Stacey & John W. Birchfield	Diana Troik
Karyl Lynn Burns & James O'Neil	The Zaruka Family Charitable Fund,
Hon. Mary Ann Cohen	Linda L. Zaruka & John W. Zaruka

\$10,000 – \$49,999

Anonymous (1)	Jordan Laby & Laby Family Foundation
Joanie & Moustapha AbouSamra	Loretta & Mike Merewether*
Dr. Jeanne Adams	Matty Park
Carol & Bob Cole	Marla McNally & Lee Phillips
Freddie Contarino	Paula & Scott Rushing
Bette & Kirk Cruikshank	Valerie & Jeffrey Snider
Nancy & Richard Francis	Becky & Steven Snyder
John Hammer	Smith-Hobson Foundation*
Jack Oakie & Victoria Horne Oakie Charitable Foundation	Susan Van Abel & Eric Oltmann
	Warren & Katie Wanamaker Trust

\$1,000 – \$9,999

Anonymous (3)	Pat Butler	Lynda & Fred Evans
Another Beautiful Day to Excel Fund*	Louise & Tim Casey	Abra Flores & Ed Burnett
Denise & Wendell Allen	Betsy Chess	Rebecca Fox
Miriam Arichea	City of Ventura	Judi & Manny Garcia
Penny Barnds	Cheri Clampett Borda	Lynn & Al Geller
Cali Baxter & Paul Copeland	Harriet Clune & Rich Stewart	Judith Gerhart
Donna & Jerry Beatty	Kenneth Collin	Nancy Grinstein & Neal Rabin
Kim Bell	Kathy Constantino	Josie Gonzalez
Janet Beyries	Bob Davidovich	Robyn & Larry Gottesdiener
Ann Blackwell & Cornelius Bond	Arlene & Gerald Davis	Anne Goulart
Evelyn & Howard Boroughs Education Fund for Rubicon Theatre*	Jennifer Davis	Barbara Gural
Corinne Bourdeau & Andrew Koski	Margot & Jonathan Davis	Rozanne & Randy Haege
Claire Bowman	MaryLu & Jim Degraffenreid	Harper Family Fund through Renaissance Charitable Foundation
Brickey Family	Randy Encinas & Doug Halter	The Harry & Judy Friedman Family Foundation
Donna Burger	Nan Drake	
Susan Lynn Burk & John Burk	Judy Dugan	
	Ellen Rauch Charitable Trust	
	Fran Elson & Hal T. Horowitz	
	Eng Flanders Group	
	Cherie & Michael Eulau	

Other gifts were received through the following: Charities Aid Foundation America, DAFgiving 360, Fidelity Charitable, ImpactAssets, Inc., Morgan Stanley, Renaissance Group, Synchrony Foundation, and US Charitable Gift Trust.

**Administered through the Ventura County Community Foundation.*

**Administered by Santa Barbara Foundation*

DONORS

RUBICON THEATRE COMPANY

ELEANOR

\$1,000 – \$9,999 (cont.)

Jessica & Harvey Harris	Kathleen Mulligan	David Simpson
Jim Harrison	Phyllis Myers & Dan Greiwe	Thomas C. Steinmetz
Mary Harrison	Judith R. Nelson	Rebecca & Jeffrey Smith
Sharon & Myron Harrison	The Neuwalder Family Trust	Karen Spoentgen
Herb Hemming	Madeline O'Rourke	Thomas C Steinmetz
Barbara & Larry Hilburn	Carol & Christopher Oberg	Jeri & Bill Sutherland
Tom Hinkle	Eileen Ogle	Sacheen & Gabe Swan
Kathie Hira & Paul Sagar	Olga & Trent Jones	Frank Toth
Hofer Properties & HP Media Signs	Giving Fund	Anne Smith Towbes [†]
Rear Adm. Jon Ives	Sandy Oshinsky	Kathryn & R. Allen Urban
J. William & Elizabeth S. Robinson Foundation, Inc.	Ruth Pash	Ventura Music Festival
Katherine & John F. Johnston	Darlene Patrick	Thea Vernoy
Marilyn Juday	Celinda Pearson	Pamela & Charles Verrey
Julius Gius Memorial Rotary Foundation	Karen & Thomas Pecht	S. Blake & Charles Wade
Chuck Kasper	Doris Porch	Brandy Walker
Megan Landry	Nancy Rasmussen & William Wayson	Claudia & Douglas (Gil) Webber
Deb Linton	Alison & Peter Ratcliffe	Charles Weeks
Terri & Dr. Mark Lisagor	Robina Riccitiello	Laurie & Steven Weiss
Dr. Tracy Long	Kay & Jerry Rich	Lalé Welsh & Jon Drucker
Jeannette & Dennis Longwill	Jane A. Roberts	Karen & Dr. Robert W. White
Marsha & Les Lovatt	Paula & Scott Rushing	Suzanne & Phil White
Elizabeth MacPherson	Darlene & John Russell	WHW Family Foundation
Dara Marks & Randy Haney	Joan Rutkowski	Katherine Wilkinson
Rosa Lee Measures	Mary Schaeffer	Ellen & David Wohlstadter
Barbara Meister	Frank Serena	Zegar Family Fund
Julie & Don Morath	Jody Shapiro & Aaron Zaidoff	
	Nancy Sieh	

\$100 – \$999

Anonymous (21)	Kathleen Baushke	Nancy Bocovich
Dixie Adeniran	Staci Beam	Inga & Jim Boldt
Jane Advani	Adele Beardsley	Josefina & James Boner
Lynn & Dennis Allen	Christine Beirne	Laura Braddock
Fran Arner-Costello	Dale Belcher	Elya Braden
Dr. Trudy Arriaga	Hon. Robert Benham	Bret Bradigan
Brooke & Everard Ashworth	Leslie & The Hon. Steven Bennett	Grace E. Brandt
Patricia Avnet	Dan Berendsen & Kevin Bruckman	Susan Bredhoff
Murray Bader	Jane Berg	Theresa Brenner-Farrell
Shirley Bailey	Roberta Bergman	Debbie Bridges
Denys Baker	Susan Berman & The Help Group	Arlene Broslow
Richard Baldwin	Peter Beuret	Karen & Kevin Brower
Liz & Dan Ballard	Teri Bibb & Andy Umberger	Michele & Steven Brown
Nigel Barker	Dell & Paul Bishop	Peggy & Roy Brown
Leslie & Bradley Barnes	Diane Blau	Dr. Teresita & Donn R. Browne
Marilyn Baron & Jay Yarm		Colleen Brun
Nell & Steven Baron		Dianna & Robert Burdick
Mary Basolo		

\$100 – \$999 (cont.)

Patricia Caloia	Yvonne Glassey	Joanne Kaplan
Alison Carlson	Kari Glynn	Phil Kaufman
Peter Chapa	Debbie & Ross Goldberg	Dr. Martha P. Kazlo
Linda Chatenever	Myrna Golden-Trester	Sally & Alan Keevy
Wietz Chatenever	Carol & Martin Goldman	Prof. Linda Kerns
Chris & David Chernof	Jeannie & Rick Graham	Judy Kerr
Gloria & Ron Chess	Dr. Howard Grey	Joan Kievman
Elise & Gary Childs	Alyssa Gutierrez	Elizabeth Kinney
Susan Clark	Toni Guy	Terry Kirsch
Jerome Clifford	Linda Hadlen	Alan Kirschbaum
Chuck Cohen	Georgia & Donald Hall	Melanie Klinghoffer
Ellen Coleman	Julia & Walter Hamann	Wendy & Will Knox
Carin Craig	Susan Harbold	Jean & Arnold Kubelun
Jon Cummings	Barbara Harison	Marjorie Kurtz
Donna Davies	Carol & Steve Hart	Linda La Frenz
Dorothy & Gary Davis	Karen Harter	Lorraine La Porte
Ivor Davis	Patricia Harter	Edward Lay
Barbara Dean	Therese Hartmann	Catherine Lee
Deborah E. Diamond	Glenn Hayden	Harriet & Eric Leibovitch
Disney Foundation	Christine & George Heavican	Lisa Lemay
Patricia & John Distad	Kathy & Tim Helms	Stephanie Levine
Terri & Andy Downen	Dr. Ruth Hemming	Steven Levine
Susan Drapkin	Ellen & Patrick Henahan	Kay Liddi
Katie & Christo Dru	Don Henniger	Wendy Lieb
Lorraine Ebdon	Frances & Kenneth Hickman	Kate Linder
Jack Eberts	Lois & Gary Hiraiwa	Christine Longbine
Elaine Edwards	Barbara & Anthony Hirsch	Nancy & Robert Lopez
Wanda Edwards	Linda Hitt	Gretchen Luchsinger
Leslie B. Einstein	Susan Hodgson &	Prof. Heidemarie Lundblad &
Diane Ellis	Paul Rosenblum	Fred Haynes
Ruthann & Jerry Feingold	Carolyn "Kim" Holmquist	Lucky & Ed Lynch
Shauna & Erik Feingold	Michelle & Reed Horwitz	Jennifer MacAfee
Kathryn Fink	Charlotte Hoyt	Cynde & Steve Magidson
Paul Finkel	Diane & Clark Hubbard	Lily Mallare
Judith & Mark Fleischman	Teri Hubert	Dara Marks & Randy Haney
Linda Flor	Missy Hughes & Hank	Charlotte Martinsson
Heather & Scott Flournoy	Cheyne	Lynda Marvel
Terrence Foley	Ann Huston	Pat & John Masterson
Linda Folsom &	Tom Imming	Margaret & Gerald Matchin
Stuart Heit	Michael Jackowitz	Janet & James McAleney
Lisa Friedman	Beth Jaffe	Douglas McAvoy
Susan Friedman	Claire & Dennis Jenks	Amanda McBroom &
Donna & J. Grant Fulgham	Ruth Johnson	George Ball
Cynthia Garcia	Zoe Iverson & Robert Gibson	Jill & Cmdr. Scott McCarty
Cris & Bill Garlington	Hannah-Beth Jackson &	Joanne McDonald
Jill & Randy George	George Eskin	Barbara McGraw &
Holly Gerber	Stephen Joyce	Christopher May
Susan & Mark Ghilarducci	Lisa Kadowaki	Kate McLean & Steven Stone
Heidi & Troy Gilbert	Ellen Kempel &	Margaret Melton
Rachelle Giuliani	Howard Goodman	

\$100 – \$999 (cont.)

Linda K. Mendelsohn &	Hoffman	Jenny Sullivan
Gerald A. Mendelsohn	Douglas Reaver	Tania & Mark Sussman
Ogden Merenbach	Clarence A. Reeves	Christine Swaidan
Robert C. Meyer	Michael Reichert	Judith & Melvyn Swope
Shannon Meyers	Dr. Paul C. Reisser	Jennifer Talmadge
Jean & J. Midgley	Debra Renick &	Shirley Thayer
Irene Miller	Greg Thayer	Daniel Thomas
Ann & David Millican	Jeane Renick	Barbara Thomson
Carl Morehouse	Ann & Rodney Resnik	Donna & James Thonis
Maggie Morin	Margery Ricards	Susan Todd-Raque &
Stephanie Mortensen-Kirkcaldie	Eleanor &	Dr. David Raque
Normetta Muir	Dr. Mark Richman	Karen Ann Trainor
Christine & George Munro	The Rileys	Mary & Tim Troske
Michael Murray	James J. Roach Jr., M.D.	Bernadette & Daniel Uhlar
Hope Neiman &	Robert L. Lynch & Dianne	Allen Vail
Mark Sarkowsky	Brace Family Foundation	Shonda & Eric Vielbig
Mary & J.W. Newbold	Ellen Robinson	Vicki Vierra
Next Step Studios	Joyce A. Robinson	Linda Von Essen
Heather Banks Nicksay	Elizabeth Rodeno	Kenneth Wagner
Lindsay Nielson	Catherine Rose	Jean Wallace Smith &
Joseph Norris	The Roses	Rodney C. Smith
Myra Nunley	Annette & Leon Rousso	Nancy Waltman &
Joyce Nussen	Esther Rubin	Harold Nachenberg
Dr. Carol & Christopher Oberg	Marie Ruelas	Marie Warner
Joanne O'Brien	Marian Sager	David L. Weaver
Susan & Andrew Odette	Andrew Salveson	Angie White
Marietta O'Farrell	Sophonria Sanders	Eliane & Richard White
Madeline O'Rourke	Santangelo Family	James Whitney
Stephanie & John Orr	Charitable Trust	Sylvia Wikholm
Ruth & George Owens	Mary & Sam Saputo	Vernon Willet
P. Markgraf Charitable Fund	Patricia Savage	Margaret &
Vernal H. Pang	Liesa Schimmelpfennig	Duane Williamson
Virginia & Samuel Panossian	Cheryl A. Schuler	Danielle & Mel Willis
Joni Parrent	Laney & Dan Scully	Phyllis & Chas. Wilson
Darlene Patrick	SEA Development	Bernice Wolf
Lauren Patten	Monica Shideler	Cheri Wolfe
Kappy Paulson	Shirley & Steve Simms	Elaine & Dave Woodruff
Fletcher Pavin	Sue Smashey	Peter Wright
Rebecca & C. Pecso	Christine & James Smith	Dr. Joann Yabrof
Dorothy & Fred Penney	Shari & Thomas Smith	Michel Young
Berta & Rafael Perez	Society of Riders	Tricia & Arnold Zane
Diane &	Motorcycle Club	Cherri L. Ziegler &
The Hon. Steven Perren	Billie & Stephen Sommars	Harvey O'Neil Ziegler
Linda Peterson	Sue Stalley	Stephanie & Kurt Zierhut
Gene Pitman	Dale Griffiths Stamos &	Leah & James Zondlo
Susan Pollard	Gregory Stamos	
Deborah Ponzio	Bruce W. Stark	
Shaune & Greg Ramirez	Tracy & Michael Stark	
Nandini Rao	Stephanie Strout	
Heike Reagan & LaVern	Michael Stump	

RUBICON THEATRE COMPANY

ELEANOR

\$50 – \$99

Anonymous (13)
 Mary Acord
 Susan Adamich
 Barclay Totten
 Pam & Mike Andrews
 Hazel Baldasti
 Mary Basolo
 Prof. Victoria Basolo
 Maryellen Benedetto
 Richard Berg
 Mr. & Mrs. Ron Boring
 Bonnie Hellman Brown & Buzz Brown
 Maren R. Briggs
 Diana Butler
 Ginny Camarillo
 Andrea Carr
 Marcia & Mark Charney
 Susan Colla
 Stephanie Coltrin Beyries
 Sharon & Ed Crane
 Chris & Paul Crice
 James Dawson
 Marjorie Diehl
 Mary & James Dobrowski
 John Dudik
 Sarah Dunn

Larry Dutra
 Kathleen & Robert Ellison
 Bobbi & Paul Endler
 Brooks Ferrell
 Ken Fisher
 Lori & Greg Frank
 Sam Goldberg
 Anne Grupp-Kaplan
 Hull Family Trust
 Linda King
 Lenore Kriteaman
 Jeanne LaPorte
 Marianne & Theodore Leitereg
 Howard Levine
 Sharon Lyle
 Lucky & Ed Lynch
 Rene Mack
 Marianela Maldonado
 Kay McElroy
 Kathleen & Brian Meyer
 Robert Nopar
 Patrick Phillippe
 DeDe Pierce

Marjorie Pugatch
 Judith Rabin & Bruce Peretz
 Robb Randall
 Gail R. Rolf
 Romero Family
 Adryan Russ & Dale Alan Cooke
 Edith Santangelo
 Jean & Alan Scott
 Joyce Shipley
 Jane & Daniel Smithson
 Allen Sobelman
 Pamela Stephens
 Katherine Stephens-Miller
 Stephen Stewart
 Amy Stonestreet
 Judith Streamer
 Dr. Ivar Tombach
 Igor Vorobyoff
 Dan Wheatman
 E.J. Whitley
 Hiroko Yoshimoto
 Tricia & Arnold Zane
 Lindsay Zibach
 Michael Ziton
 Robert Zitsman

RUBICON THEATRE COMPANY

ELEANOR

The listing below reflects donations made between April 2, 2025 to April 1, 2026. Donations made after April 1, 2026 will be listed in the next program. To make a donation, or to let us know of any errors or omissions, please contact Perla Ponti, Chief of Staff, at 805.667.2912, ext. 225, or e-mail her at pponti@rubicontheatre.org.

EDUCATION DONORS

Anonymous (9)
 Susan Adamich
 Dr. Jeanne P. Adams
 Kathleen Applen
 Miriam Ariche
 Dr. Trudy Arriaga
 Richard Baldwin
 Penelope Barnds
 Sharon Bettis
 Teri Bibb & Andy Umberger
 Evelyne & Dirk Boon
 Evelyn & Howard Boroughs
 Education Fund for
 Rubicon Theatre*
 Elya Braden
 Dianna & Robert Burdick
 Donna Burger
 Janey Campbell
 Alison Carlson
 Eric Carter
 Gloria & Ronald Chess
 Freddie Contarino
 Donna Davies
 Dorothy & Gary Davis
 Barbara Dean
 Kevin Downey
 Susan Drapkin
 Linda Drevenstedt
 Peter Ellenstein
 Lynda & Fred Evans
 Linda Folsom & Stuart Heit
 Rebecca Fox
 Lori & Gregory Frank
 Cindy Garcia
 Cynthia Garcia
 Judi & Manny Garcia
 Rachele Giuliani
 Kari Glynn
 Debbie & Ross Goldberg
 Sam Goldberg
 Jeannie & Rick Graham
 Erica Hallahan

John Hammer
 Barbara Harison
 Harper Family Fund through
 Renaissance Charitable
 Foundation
 Jessica & Harvey
 Mitchell Harris
 Cathy Herrera
 Judy Hillestad
 Kathie Hira & Paul Sagar
 Barbara Hirsch
 Jack Oakie & Victoria Horne
 Oakie Charitable Foundation
 Carol & Edwin Jones
 Helena Jonsdottir
 Judith & Harry Friedman
 Family Foundation
 Joanne Kaplan
 Chuck Kasper
 Alan Kirschbaum
 Lorraine La Porte
 Jeanne LaPorte
 Tami Lee
 Harriet & Eric Leibovitch
 Kay Liddi
 Cynde & Steve Magidson
 Marianela Maldonado
 Patricia Matthews
 Jill & Scott McCarty
 Vincent & Meredith Melamed
 Bonnie & Mike Mercadante
 Loretta &
 Mike Merewether*
 Carl Morehouse
 Judith R. Nelson
 Joseph Norris
 Ian Nunney and Family
 Joyce Nussen
 Eileen Ogle
 Deborah Owens
 Shilo Perez
 Gene Pitman

Nandini Rao
 Alison & Peter Ratcliffe
 Paul C. Reisser MD
 Eleanor & Dr. Mark Richman
 The Rileys
 Gail R. Rolf
 The Romero Family
 The Roses
 Marie Ruelas
 Paula & Scott Rushing
 Sherree Rushton
 Robert Sallade
 Leonid Sassoon
 Jody Shapiro &
 Aaron Zaidoff
 Amy Shinden
 Joyce Shipley
 Jean Wallace Smith &
 Rodney C. Smith
 Jane & Daniel Smithson
 Valerie & Jeffrey Snider
 Barry Speyer
 Marilyn & Marty Spiegel
 Karen Spoentgen
 Amanda Squitieri
 Sue Stalley
 Jenny Sullivan
 Barbara Thomson
 Karen Ann Trainor
 Aubrey Traub
 Diana Troik & Art Shaffman
 Shonda & Eric Vielbig
 Peter Weal
 Barbara & Daniel Wiggins
 Angela White
 Eliane & Richard White
 Tricia & Arnold Zane
 Lindsay Zibach
 Robert Zitsman

*Administered through the Ventura County Community Foundation.

RUBICON THEATRE COMPANY

YOUR DONATIONS MAKE ALL THE DIFFERENCE

Your support has helped Rubicon bring innovative storytelling, education, and outreach to the community for over 20 years. As we continue recovering from the pandemic, your support is more important than ever. Please consider making a donation to help keep the arts alive.

SCAN TO DONATE:

OTHER WAYS TO SUPPORT RUBICON

- ▶ **SPONSOR A SHOW**
 Contact Karyl Lynn Burns at klburns@rubicontheatre.org or at 805.667.2912 ext. 224, to find out more about our customizable sponsorship packages.
- ▶ **JOIN OUR LEGACY SOCIETY**
 Members of the Legacy Society help ensure Rubicon's artistic and educational programs enrich future generations of theatre-lovers. For information on making a lasting impact, contact Karyl Lynn Burns at klburns@rubicontheatre.org or 805.667.2912, ext. 224.

Tributes are made to honor a loved one, celebrate a special occasion, or remember those who have passed away. Thank you to the following individuals for making a tribute gift to the theatre. These listings reflect one-time gifts of \$100 or more, received April 2, 2025 to April 1, 2026. To make a gift, or to let us know about a correction, please contact Perla Ponti, Chief of Staff, at 805.667.2912, ext. 225, or e-mail her at pponti@rubicontheatre.org.

In Memory of Lynn Allen
Dennis Allen

In Honor of Penny Barnds
Gene Pitman

In Memory of Alexander Christian Beirne
Christine Berine

In Memory of Clement E. Blake
Carolyn Holmquist

In Honor of Karyl Lynn Burns
*Barbara Meister
James Witney
Zoe Iverson & Gib Johnson
Barbara Hirsch*

In Honor of Karyl Lynn Burns on Her Birthday
Penny Barnds

In Honor of Karyl Lynn Burns & Jim O'Neil
Jenny Sullivan

In Honor of the Cast of Bonnie & Clyde
*Jack Oakie & Victoria Horne Oakie
Charitable Foundation*

In Memory of Mary Choura
John & Pat Masterson

In Honor of Eloise Olson Cohen
Chuck Cohen

In Honor of Mary Ann Cohen
*Cheryl A. Schuler
Lynda Marvel*

In Honor of The Drowsy Chaperone Cast
*Jack Oakie & Victoria Horne Oakie
Charitable Foundation*

In Honor of Tom Dugan
*Jack Oakie & Victoria Horne Oakie
Charitable Foundation*

In Honor of Richard Francis' Birthday
Eileen Whitley

In Honor of Joseph Fuqua on His 25th Anniversary with Rubicon
*Jack Oakie & Victoria Horne Oakie
Charitable Foundation*

In Honor of Joseph Fuqua, Summer Program Director
Penny Barnds

In Honor of Guest Services
*Jack Oakie & Victoria Horne Oakie
Charitable Foundation*

In Memory of Virginia L. Iverson
Susan and Andrew Odette

In Memory of Normand Kurtz
Marjorie & Susie Kurtz

In Honor of Kay Liddi's 90th Birthday
*Freddie Contarino
Rebecca Fox*

In Honor of Rosa Lee Measures
Joni Parrent

In Honor of Barbara Meister's Special Birthday
*Judi & Manny Garcia
Jody Shapiro*

In Memory of Eileen Ogle
*Karyl Lynn Burns
Mary Ann Cohen*

In Honor of Eric Oltmann's 90th Birthday
*Paul Finkel
Nancy & Richard Francis
Freddie & Andrea Contarino*

In Memory of Matthew Perry
Anonymous

In Honor of Marlena Daly Roberts
Wanda Edwards

In Memory of Lorraine Serena
Frank Serena

In Memory of Bradley Dean Setser
*Staci Beam
Dr. Susan Berman &
The Help Group*

*Debbie Bridges
Terry & Andy Downen
Eng Flanders Group, Inc
Holly Gerber
Janice Jacobsen
Larry and Cheri Kaufman
DeDe Pierce*

*Society of Riders Motorcycle Club
Mary & Lester Winder
Yardi*

In Memory of Gary C. Stafford
Harper Family Fund

In Honor of Rob Sternin & Prudence Fraser
*Louise & Tim Casey
Nora McNeely Hurley & Michael Hurley*

In Honor of Seryozha La Porte, his Mother and Their Story
Trudy Arriaga

Marilyn & Marty Spiegel

In Memory of George & Mary Snyder
Becky & Steven Snyder

In Memory and Honor of Art Shaffman
*Karyl Lynn Burns and James O'Neil
Jody Shapiro & Aaron Zaidoff
Diana Troik*

Custom AWARDS & ENGRAVING

VENTURA'S #1 ENGRAVING SPECIALISTS



**Awards • Plaques • Trophies • Medals
Recognition Awards • Acrylic Awards
Sublimation • Promotional • Tumblers
Wood Engraving • Fiber Engraving
Apparel • Gifts • Hand Engraving
Personalized Gifts • Glassware
Crystal Awards • Signage**

PHONE: 805-658-2139

www.customawardsventura.com

1884 Eastman Ave. #107, Ventura CA 93003

BEHIND-THE-SCENES

RUBICON THEATRE COMPANY

ELEANOR

RUBICON THEATRE STAFF

Interim Artistic Director/Artistic AssociateJ. Scott Lapp
Co-Founder & Producing Artistic Director..... Karyl Lynn Burns
Co-Founder & Artistic Director Emeritus James O'Neil
Associate Artistic Director & ProducerStephanie Coltrin
Chief of Staff Perla Medina Ponti
Production Manager..... Christopher Beyries
Company Manager/Donor Relations..... Holly Lapp
Technical Director..... Jimmy Callahan
Guest Services Director Steve Braun
Business Manager & Finance Director Ellen White
Summer Program Director..... Joseph Fuqua
House Manager & Volunteer Coordinator..... Diane Frantela
Guest Services Associate Vanessa Navarro
Marketing Assistant & Social Media Manager Spencer Zetterberg

ARTISTIC CONSULTANTS

Artistic Associates Thomas S. Giamario, Jenny Sullivan
Company Members..... George Ball, Joseph Fuqua, Joe Spano
Director of New Works Michael Jackowitz
Director of International Programming Katharine Farmer

BUSINESS CONSULTANTS

Strategic Development Hannah-Beth Jackson
Systems & IT Israel Galindo, Advanced Networks
Graphic Design & Website Mance Creative, Inc.
Paid Digital Media Consultant Sandy Aichner

ADDITIONAL PRODUCTION CREDITS

Master Electrician.....Claire Cleary, Yelena Babinskaya
Set Construction..... Sets to Go
Backstage Crew/A2Joe Lopez
Load-In Crew Mike Butler, Stewart Fogey, Ben Hament,
Joe Lopez, James Spuil
Wig SupervisorDanielle White



VENTURA BIRTH PHOTOGRAPHY

MATERNITY, NEWBORN, & MILESTONE SESSIONS IN VENTURA COUNTY & BEYOND

Documenting your unique birth story & supporting you every step of the way.



www.venturabirthphotography.com

Loren Haar & Emily Storz.

ABOUT RUBICON THEATRE COMPANY

RUBICON THEATRE COMPANY

ELEANOR

Rubicon Theatre Company was founded in 1998 as an actors' and directors' company, committed to creating a nurturing environment for artists where exploration and experimentation are encouraged and supported. In the company's intimate 180-seat home in Ventura's Downtown Cultural District, Rubicon has played to more than 550,000 audience members and reached 55,000 students.

True to the Company's name and the vision of founders Karyl Lynn Burns and James O'Neil and Interim Artistic Director J. Scott Lapp, the company has developed a reputation for innovation, approaching classics with a fresh eye, and treating new works with a reverence often reserved for classics. Rubicon has been the recipient of a special award for Sustained Excellence from the Los Angeles Drama Critics Circle, and has received two New York Drama Desk Awards. The Company has also received multiple Ovation, Indy, Rep, and NAACP Awards.

Many luminaries have graced the Rubicon stage, including Tony, Obie, Olivier, Ariel, and Dora Award winners. These artists work in concert with Rubicon company members, regional and local professionals, and aspiring young artists from Rubicon's education and outreach programs.

Rubicon is governed by a Board of Directors of local business and civic leaders led by Doug Halter, and supported by a Board of Advisors and a volunteer auxiliary.



RUBICON THEATRE COMPANY

1006 E. Main Street, Ventura, CA 93001
Box Office: 805.667.2900 Fax: 805.667.2903
Offices: 805.667.2912
guestservices@rubicontheatre.org
www.RubiconTheatre.org

*Rubicon Theatre Company is a Non-Profit 501(c)3 Organization.
Federal Tax ID #: 77-0495901*



/RubiconTheatre



@RubiconTheatre



@RubiconTheatre



@RubiconTheatreCompany4415



RUBICON THEATRE COMPANY

LOOKING FOR THE PERFECT GIFT?

Give the gift of theatre with RUBICON THEATRE gift cards!



BUY TODAY! SCAN CODE »

www.rubicontheatre.org/about-rubicon/gift-cards/

OR CALL: 805.667.2900





FRED EVANS
Co-Founder



THE FRED EVANS TEAM

RE/MAX[®]

GOLD COAST REALTORS

OFFICE **805.339.3502**

MOBILE **805.267.6701**

SEE FRED SELL... HE SELLS WELL!

Fred Evans... Sells Ventura County to the World!



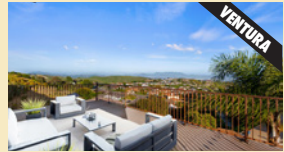
OJAI VALLEY

10948 ALTO COURT Ojai Valley Saddle Mountain. Mediterranean master piece. Originally built in 2003, featuring 4 bedrooms, 4 1/2 baths, approximately 6,133 square feet on almost a 5-acre lot. Four fireplaces. Infinity pool, outdoor kitchen and BBQ. **LISTED FOR \$4,995,000**
www.10948AltoCourt.com



VENTURA

2790 SAILOR AVENUE Ventura Keys Waterfront Boat Dock Home! Tuscan-style villa. Spacious two-story, 3-BD, 4-BA home, rebuilt in 2009, w/ approx. 3458 sq ft. High end & custom features throughout. Waterfront deck, plus (approx.) 35 ft. boat dock. **NEW PRICE \$3,495,000**
www.2790SailorAve.com



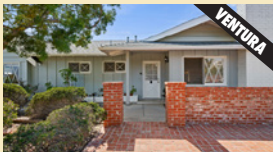
VENTURA

1184 COLINA VISTA 20-acre private gated estate in the hills of Ventura. Panoramic views. 4 BR, 3 BAs. Built in 1998 w/ approx. 2774 sq ft. Pool & spa. Your own family compound, w/ your very own hillside hiking trail! 3-car garage. Endless possibilities. **OFFERED AT \$2,500,000**
www.1184ColinaVista.com



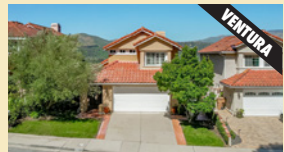
VENTURA

2346 SUNSET DRIVE Ventura Heights - Ocean & Island Views. Custom-built in 1929, this 3-BD, 2-BA hillside home offers approx. 1,998 sq ft on a 5,397 sq ft lot w/ panoramic ocean & Island views. Lower-level primary suite features a sitting area, soaking tub, walk-in closet, sweeping views. **NEW PRICE \$1,595,000**
www.2346SunsetDrive.com



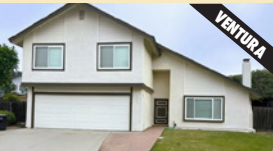
VENTURA

683 COLINA VISTA - COMING SOON! Desirable Ondulando Single Story View Home. Built in 1960 w/ approx. 1795 SF, 3 BD, 2 full BAs, lot approx. 12,632 SF. Gas fireplace. Newer vinyl plank flooring in hallway. His and her closet in primary bedroom. Indoor laundry room. Pass through garage. **LISTED FOR \$1,199,000**
www.683ColinaVista.com



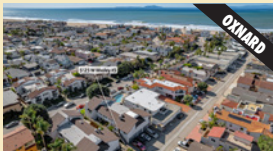
VENTURA

2349 AZTEC AVENUE Brock Hills Beauty West Ventura. Panoramic views of the mountains, ocean, Ventura River Valley, community orchard, and city below. Beautifully upgraded 3-BD, 2.5-BA approx. 1,633 sq ft. Over \$175,000 in upgrades. Don't miss this opportunity to own a view home in one of Ventura's neighborhoods. **OFFERED AT \$1,075,000**
www.2349AztecAve.com



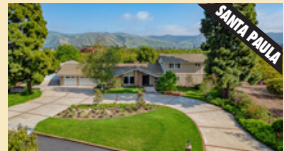
VENTURA

2302 PANDA PLACE Popular East Ventura Bristol Bay. Originally built in 1978 featuring 3 bedrooms, 2 1/2 baths, approximately 1,786 square feet on an 8,712 square foot lot. New paint and many new upgrades. **LISTED FOR \$999,000**
www.fredevans.com



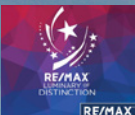
OXNARD

5125 W WOOLEY ROAD 5 Oxnard Shores Beach condo. Quiet & sunny upstairs corner unit. 2 BDRs, 2 BAs w/ approx. 994 sq ft & built in 1978. Updated. Wood floors, deck, & loft. Low HOA dues. Convenient location to nearby specialty stores and restaurants, and of course the beach! **NEW PRICE AT \$715,000**
www.5125WestWooleyRd5.com



SANTA PAULA

280 CUMMINGS ROAD Private gated estate on approximately 2 acres featuring 5 bedrooms, 4.5 baths, and 4,269 sq ft of living space. Includes a 400 sq ft detached pool house/game room with potential for an additional 1,200 sq ft guest unit, all surrounded by orchards, open land, and scenic mountain views. **OFFERED AT \$2,999,000**
www.280CummingsRoad.com



5720 Ralston St. Ventura California
visit **www.FredEvans.com** for current, active listings

DRE License No. 00893591